

External Solid Wall Lintels - CN71A

Exterior solid wall lintels

Benefits

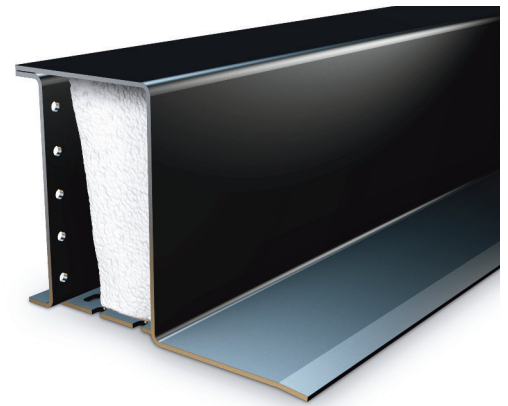
- Duplex Corrosion Protection System**
Ensures optimum durability and longevity
- Integral plaster key**
With staggered slots to the inner flange and ribbed underside of insulation
- Continuous insulation**
Maximising thermal efficiency, minimising cold bridging

Box profile

- Saves on brickwork and insulation
- Resists twisting during construction

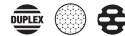
Instant full load use

Box profile is designed to carry full load of wet masonry as soon as it is installed

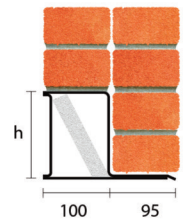


200mm and 215mm Exterior Solid Walls

Standard Duty



Standard lengths are available in 150mm increments.



Note: CN71 and CN81 lintels can also be used as heavy duty wall eaves lintels for 70mm to 100mm cavities.

CN71A

Standard lengths (mm)	900-1500	1650-2100	2250-2700
SWL (kN)	29	27	20
Weight (kg/m)	9.3	9.3	9.3
Nominal height 'h' (mm)	143	143	143

The SWL (safe working load) is based on the total UDL (uniform distributed load) over maximum span using 150mm end bearings.

Catnic

Pontypandy Industrial Estate
Caerphilly
CF83 3GL
T: 029 2033 7900
F: 029 2086 7796

01/2015

www.catnic.com

Care has been taken to ensure that the contents of this publication are accurate, but Tata Steel Europe Limited and its subsidiaries, which includes Tata Steel UK Limited, do not accept responsibility or liability for errors or information that is found to be misleading. Before using products or services supplied or manufactured by Tata Steel Europe Limited and its subsidiaries, customers should satisfy themselves as to their suitability.

© Copyright 2015 Tata Steel UK Limited.