

# Timber Frame Cavity Wall Lintels - CTF9

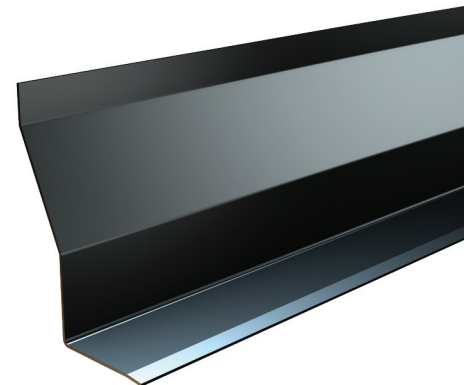
## Timber frame lintels

### Benefits

- Duplex Corrosion Protection System**  
Ensures optimum durability and longevity
- Built-in damp proof course**  
Sloping outer face and duplex corrosion protection together provide a built-in DPC

### Restraint clips

Allows vertical differential movement of timber frame.  
All timber frame models must be secured with restraint clips (supplied) and a batten (not supplied) to prevent lateral deflection (twist) during the building stage and to achieve the loading figures shown.

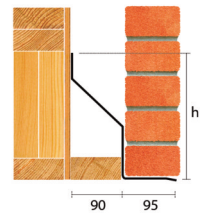


## 90-105mm Cavity 102mm Outer Leaf

### Standard Duty



Standard lengths are available in 150mm increments up to 3000mm, 300mm at lengths from 3000mm to 4800mm (including 4575mm but excluding 4500mm).



**Note:** Lintels should be suitably propped during construction. Lintels for timber frame construction are supplied with lintel restraint clips (free of charge), which must be screw or nail fixed to the timber frame to allow for differential movement between the timber structure and the brick facing.

### CTF9

Standard lengths (mm)	750-1500	1650-2400	2550-3000	3300-3600	3900-4800
SWL (kN)	5	7	7	9	10
Weight (kg/m)	4.7	5.9	8.1	8.4	9.6
Nominal height 'h' (mm)	146	146	200	220	271

The SWL (safe working load) is based on the total UDL (uniform distributed load) over maximum span using 150mm end bearings.