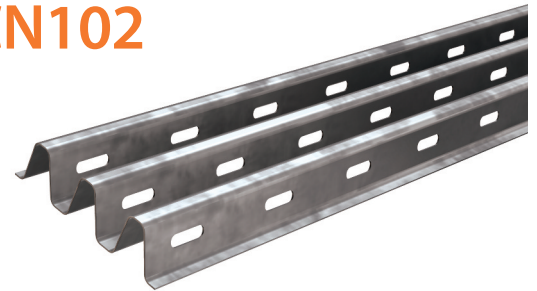


# Internal Wall Lintel - CN92 and CN102

Partition and loadbearing wall lintel



## Benefits

**Integral Plaster key**  
Lozenge shaped staggered holes to sides of corrugated profile

- Suitable for nominal domestic loading

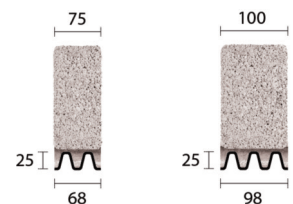
**Note:** Whilst the above information is intended to offer general guidance regarding typical applications, it should not be considered as comprehensive. Requirements not fully covered by the above should be referred to our technical services department for individual consideration.

## 75mm and 100mm Interior Solid Walls

### Extra Light Duty



Standard lengths are available in increments of 150mm.



	CN92	CN102
Standard lengths (mm)	1050-1200	1050-1200
SWL (kN)	7	7
Weight (kg/m)	1.2	1.8
Nominal height 'h' (mm)	25	25

**Note:** When using **CN92** and **CN102** lintels normal building practice should be observed, in that one course of blockwork should be laid on the lintel and the mortar allowed to harden for at least 24 hours before additional loads are applied.

The SWL (safe working load) is based on the total UDL (uniform distributed load) over maximum span using 75mm end bearings for **CN92** and **CN102**.