

External Solid Wall Lintels - CN81B

Exterior solid wall lintels

Benefits

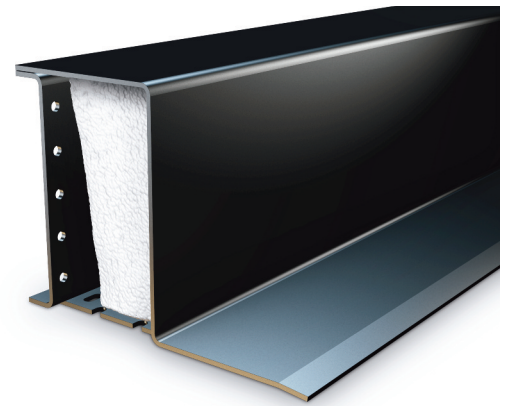
- Duplex Corrosion Protection System**
Ensures optimum durability and longevity
- Integral plaster key**
With staggered slots to the inner flange and ribbed underside of insulation
- Continuous insulation**
Maximising thermal efficiency, minimising cold bridging

Box profile

- Saves on brickwork and insulation
- Resists twisting during construction

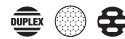
Instant full load use

Box profile is designed to carry full load of wet masonry as soon as it is installed

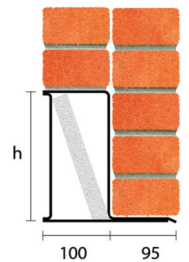


200mm and 215mm Exterior Solid Walls

Standard Duty



Standard lengths are available in 150mm increments up to 3000mm, 300mm at lengths 3000mm to 3600mm.



Note: CN71 and CN81 lintels can also be used as heavy duty wall eaves lintels for 70mm to 100mm cavities.

CN81B	
Standard lengths (mm)	2100-3600
SWL (kN)	29
Weight (kg/m)	15.1
Nominal height 'h' (mm)	219

The SWL (safe working load) is based on the total UDL (uniform distributed load) over maximum span using 150mm end bearings.