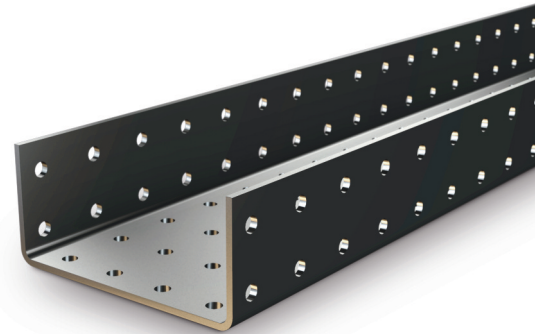


Internal Wall Lintel - CN100

Partition and loadbearing wall lintel



Benefits

 **Duplex corrosion protection**
Ensures optimum durability and longevity

 **Integral Plaster key**
With holes to all sides of channel profile

As corrugated lintel plus:

Suitable for masonry/timber floor loads.

Note: Whilst the above information is intended to offer general guidance regarding typical applications, it should not be considered as comprehensive. Requirements not fully covered by the above should be referred to our technical services department for individual consideration.

100mm Interior Solid Walls

Light Duty



Standard lengths are available in increments of 150mm.



| CN100 | |
|-------------------------|-----------|
| Standard lengths (mm) | 1050-1200 |
| SWL (kN) | 10 |
| Weight (kg/m) | 3.7 |
| Nominal height 'h' (mm) | 50 |

* Not suitable for floor loads