

External Plaster Key - Type PKS87

Manufactured from galvanised steel to BS EN 10346:2009 of grade Z275 the external plaster key provides a secure key for a rendered finish.

Application

Suitable for use with Cougar lintels (CG, CH, CX) timber frame lintels (CTF5, CTF7, CTF9, CN23) and External solid wall lintels (CN71 and CN81).

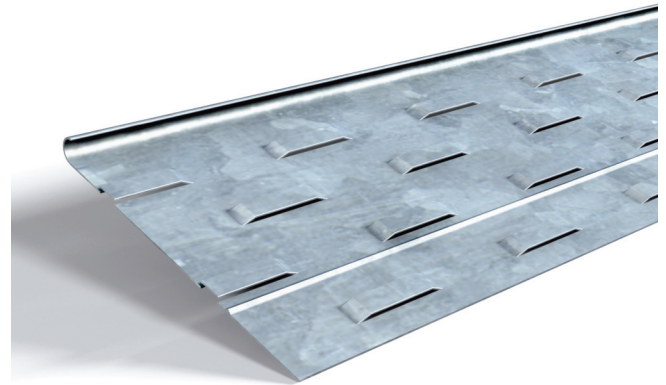
Storage

Unless required immediate use on site the product should be stored in a clean dry environment.

Installation notes

External plaster key simply clips into place and is secured using a full length of adhesive bead (supplied by others). The PKS87 Plaster Key **MUST** be fitted to the lintel before the lintel is installed.

- i) Ensure plaster key mounting surface and under side of lintel is clean, dry and free from grease and dirt.
- ii) Locate plaster key centrally over lintel.
- iii) Apply a 6mm bead of adhesive along the full length of plaster key in accordance with adhesive manufacturers instructions.
- iv) Locate the plaster key against the toe of the lintel at the position previously determined and rotate onto lintel, apply downward pressure to ensure full adhesive contact to both surfaces.
- v) Pull surfaces apart to allow adhesive to dry for 10-15 minutes.
- vi) Reposition the plaster key onto the lintel base (as step iv) applying uniform pressure over the lintel length.
- vii) A strong initial bond is achieved whilst full bond strength results in 48-72 hours.



Catnic

Pontypandy Industrial Estate
Caerphilly
CF83 3GL
T: 029 2033 7900
F: 029 2086 7796

01/2015

www.catnic.com

Care has been taken to ensure that the contents of this publication are accurate, but Tata Steel Europe Limited and its subsidiaries, which includes Tata Steel UK Limited, do not accept responsibility or liability for errors or information that is found to be misleading. Before using products or services supplied or manufactured by Tata Steel Europe Limited and its subsidiaries, customers should satisfy themselves as to their suitability.

© Copyright 2015 Tata Steel UK Limited.