

Extra Heavy Duty Steel Lintel

TX190/100

Wall Construction

Inner Leaf

Outer Leaf

Cavity

Loading Details

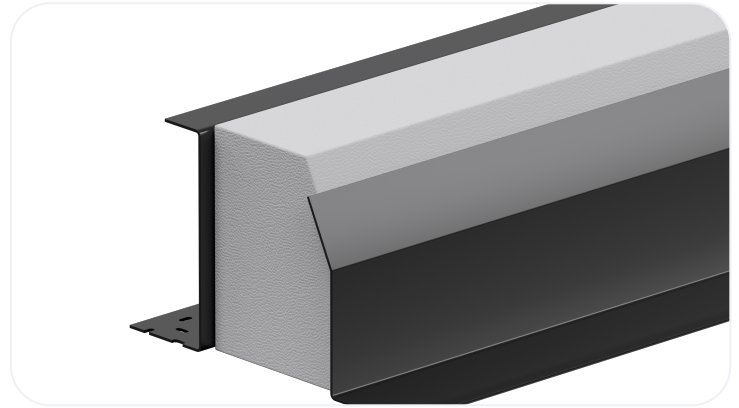
CAVITY WALL

100-115

100-102

190-205

EXTRA HEAVY



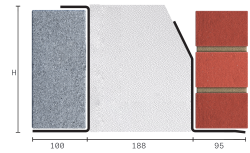
Specification

Product Code	Standard Length (mm)	SWL (kN) 1:1/19:1	Weight (kg)	Nominal Height (mm)
TX190/1000750	750	60	13.08	229
TX190/1000900	900	60	15.70	229
TX190/1001050	1050	60	18.31	229
TX190/1001200	1200	60	20.93	229
TX190/1001350	1350	60	23.54	229
TX190/1001500	1500	60	26.16	229
TX190/1001650	1650	60	28.78	229
TX190/1001800	1800	60	31.39	229
TX190/1001950	1950	60	34.01	229
TX190/1002100	2100	60	36.62	229
TX190/1002250	2250	60	50.11	229
TX190/1002400	2400	60	53.45	229
TX190/1002550	2550	60	56.79	229
TX190/1002700	2700	60	60.13	229
TX190/1002850	2850	55	63.47	229
TX190/1003000	3000	55	66.81	229
TX190/1003300	3300	50	73.49	229
TX190/1003600	3600	50	80.17	229
TX190/1003900	3900	50	86.85	229
TX190/1004200	4200	32	93.53	229
TX190/1004575	4575	32	101.89	229
TX190/1004800	4800	32	106.90	229

- The SWL (safe working load) is based on the total UDL (uniform distributed load) over maximum span using 150mm end bearings.
- Standard lengths are available in increments of 150mm at lengths up to 3000mm, 300mm at lengths from 3000mm - 4800mm (including 4575 but excluding 4500mm).
- Separate DPC tray required
- When using the Catnic TH and TX Open Back ranges with concrete floors, always ensure that the blockwork is built tight against the inner vertical face, and that a mortar joint is added to the top of the blockwork so that the floor units have an even spread over the inner flange

of the lintel.

- Achieving a remarkably low Psi value ensures this Catnic lintel will always meet the performance criteria requirements of Appendix Q found in SAP 2012 providing easy compliance with Part L of the Building Regulations



All ratios are shown inner to outer

Note: Whilst the above information is intended to offer general guidance regarding typical applications, it should not be considered as comprehensive. Requirements not fully covered by the above should be referred to our technical services department for individual consideration.

Catnic

Pontyprandy Industrial Estate Caerphilly CF83 3GL United Kingdom

+44 (0)29 2033 7900 | catnic.technical@tatasteeleurope.com

www.catnic.com

Care has been taken to ensure that the contents of this publication are accurate, but Tata Steel Europe Limited and its subsidiaries, which includes Tata Steel UK Limited, do not accept responsibility or liability for errors or information that is found to be misleading. Before using products or services supplied or manufactured by Tata Steel Europe Limited and its subsidiaries, customers should satisfy themselves as to their suitability.

© Copyright 2024 Tata Steel UK Limited.