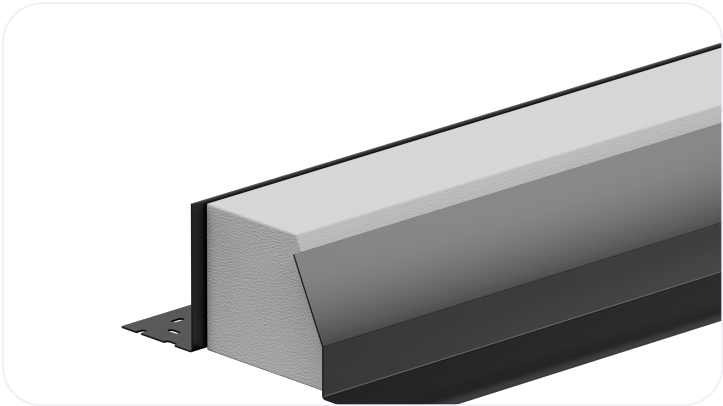


Standard Duty Steel Lintel

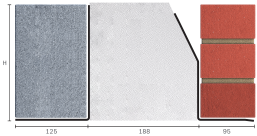
TS190/125

Wall Construction	CAVITY WALL
Inner Leaf	125-140
Outer Leaf	100-102
Cavity	190-205
Loading Conditions	STANDARD DUTY



Specification

Product Code	Standard Length (mm)	SWL (kN) 1:1/3:1	Weight (kg)	Nominal Height (mm)
TS190/1250750	750	12	6.59	153
TS190/1250900	900	12	7.90	153
TS190/1251050	1050	12	9.22	153
TS190/1251200	1200	12	10.54	153
TS190/1251350	1350	17	17.32	198
TS190/1251500	1500	17	19.25	198
TS190/1251650	1650	17	21.17	198
TS190/1251800	1800	17	23.09	198
TS190/1251950	1950	20	33.35	236
TS190/1252100	2100	20	35.91	236
TS190/1252250	2250	20	38.48	236
TS190/1252400	2400	20	41.04	236
TS190/1252550	2550	26	45.65	229**
TS190/1252700	2700	26	48.33	229**
TS190/1252850	2850	26	51.02	229**
TS190/1253000	3000	26	53.70	229**



All ratios are shown inner to outer

- ** Channel to inner leaf
- The SWL (safe working load) is based on the total UDL (uniform distributed load) over maximum span using 150mm end bearings.
- Standard lengths are available in increments of 150mm at lengths up to 3000mm.
- Separate DPC tray required
- Achieving a remarkably low Psi value ensures this Catnic lintel will always meet the performance criteria requirements of Appendix Q found in SAP 2012 providing easy compliance with Part L of the Building Regulations

Note: Whilst the above information is intended to offer general guidance regarding typical applications, it should not be considered as comprehensive. Requirements not fully covered by the above should be referred to our technical services department for individual consideration.

Catnic

Pontypandy Industrial Estate Caerphilly CF83 3GL
United Kingdom

+44 (0)29 2033 7900

catnic.technical@tatasteeleurope.com

catnic.com

Tata Steel UK Limited

18 Grosvenor Place, London, SW1X 7HS

Registered in England No. 02280000

Care has been taken to ensure that the contents of this publication are accurate, but Tata Steel Europe Limited and its subsidiaries, which includes Tata Steel UK Limited, do not accept responsibility or liability for errors or information that is found to be misleading. Before using products or services supplied or manufactured by Tata Steel Europe Limited and its subsidiaries, customers should satisfy themselves as to their suitability.

© Copyright 2025 Tata Steel UK Limited