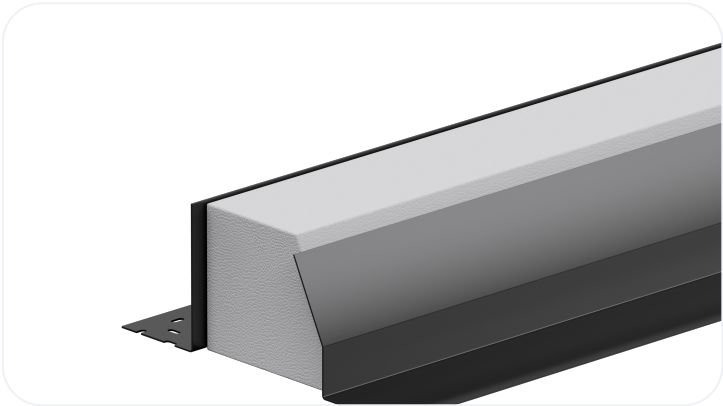


Standard Duty Steel Lintel

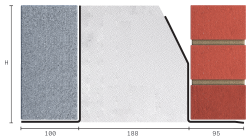
TS190/100

Wall Construction	CAVITY WALL
Inner Leaf	100-115
Outer Leaf	100-102
Cavity	190-205
Loading Conditions	STANDARD DUTY



Specification

Product Code	Standard Length (mm)	SWL (kN) 1:1/3:1	Weight (kg)	Nominal Height (mm)
TS190/1000750	750	15	6.29	153
TS190/1000900	900	15	7.55	153
TS190/1001050	1050	15	8.81	153
TS190/1001200	1200	15	10.07	153
TS190/1001350	1350	15	11.33	153
TS190/1001500	1500	15	12.59	153
TS190/1001650	1650	18	20.49	202
TS190/1001800	1800	18	22.36	202
TS190/1001950	1950	20	24.22	202
TS190/1002100	2100	20	26.08	202
TS190/1002250	2250	22	36.95	233
TS190/1002400	2400	22	39.41	233
TS190/1002550	2550	26	41.87	233
TS190/1002700	2700	26	44.33	233
TS190/1002850	2850	26	49.70	229**
TS190/1003000	3000	26	52.32	229**
TS190/1003300	3300	26	57.55	229**
TS190/1003600	3600	26	62.78	229**



All ratios are shown inner to outer

- ** Channel to inner leaf
- The SWL (safe working load) is based on the total UDL (uniform distributed load) over maximum span using 150mm end bearings.
- Standard lengths are available in increments of 150mm at lengths up to 3000mm, 300mm at lengths from 3000mm to 3600mm.
- Separate DPC tray required
- Achieving a remarkably low Psi value ensures this Catnic lintel will always meet the performance criteria requirements of Appendix Q found in SAP 2012 providing easy compliance with Part L of the Building Regulations

Note: Whilst the above information is intended to offer general guidance regarding typical applications, it should not be considered as comprehensive. Requirements not fully covered by the above should be referred to our technical services department for individual consideration.

Catnic

Pontypandy Industrial Estate Caerphilly CF83 3GL
United Kingdom
+44 (0)29 2033 7900

catnic.technical@tatasteeleurope.com

catnic.com

Tata Steel UK Limited

18 Grosvenor Place, London, SW1X 7HS
Registered in England No. 02280000

Care has been taken to ensure that the contents of this publication are accurate, but Tata Steel Europe Limited and its subsidiaries, which includes Tata Steel UK Limited, do not accept responsibility or liability for errors or information that is found to be misleading. Before using products or services supplied or manufactured by Tata Steel Europe Limited and its subsidiaries, customers should satisfy themselves as to their suitability.

© Copyright 2025 Tata Steel UK Limited