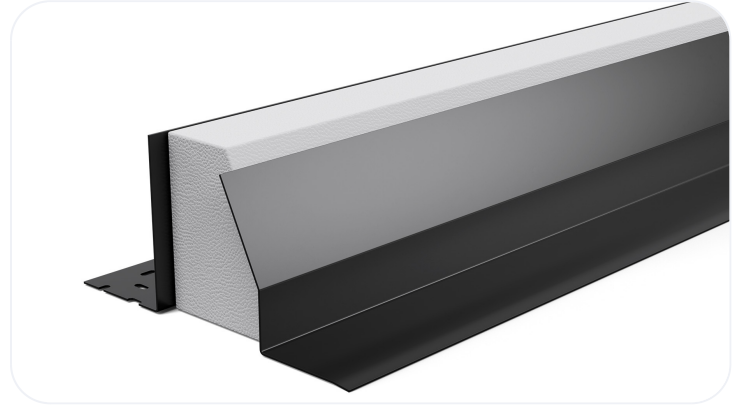


Standard Duty Steel Lintel

TS130/125

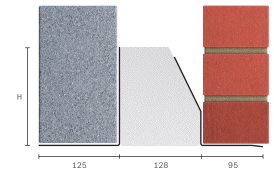
Steel lintel with unique thermal break for use in cavity wall construction, designed to support typical masonry, timber floor and roof loads found in most buildings and suitable for fairfaced inner leaf masonry. The easy to use open back profile allows masonry to be built up continuously on both outer and inner leaf, available in standard, heavy, and extra heavy duty from 90-205mm cavities. Fully insulated, with complete thermal break, integral plaster key and Catnic's signature black powder coating.



Wall Construction	CAVITY WALL
Inner Leaf	125-140
Outer Leaf	100-102
Cavity	130-145
Loading Conditions	STANDARD DUTY

Specification

Product Code	Standard Length (mm)	SWL (kN) 1:1/3:1	Weight (kg)	Nominal Height (mm)
TS130/1250750	750	12	6.38	153
TS130/1250900	900	12	7.66	153
TS130/1251050	1050	12	8.94	153
TS130/1251200	1200	12	10.21	153
TS130/1251350	1350	17	16.81	198
TS130/1251500	1500	17	18.68	198
TS130/1251650	1650	17	20.54	198
TS130/1251800	1800	17	22.41	198
TS130/1251950	1950	20	32.47	236
TS130/1252100	2100	20	34.97	236
TS130/1252250	2250	20	37.46	236
TS130/1252400	2400	20	39.96	236
TS130/1252550	2550	26	44.68	229**
TS130/1252700	2700	26	47.30	229**
TS130/1252850	2850	26	49.93	229**
TS130/1253000	3000	26	52.56	229**



All ratios are shown inner to outer

- ** Channel to inner leaf
- The SWL (safe working load) is based on the total UDL (uniform distributed load) over maximum span using 150mm end bearings.
- Standard lengths are available in increments of 150mm at lengths up to 3000mm.
- Separate DPC tray required
- Achieving a remarkably low Psi value ensures this Catnic lintel will always meet the performance criteria requirements of Appendix Q found in SAP 2012 providing easy compliance with Part L of the Building Regulations

Benefits

- Psi values of 0.02 to 0.05 W/mK
- Duplex Corrosion Protection
- Integral Plaster Key
- Integral Insulation

- Made in the UK for a lower carbon footprint and certified to BES 6001 Responsible Sourcing standard.
- Made using lower carbon manufacturing
- Designed to maximise energy saving at home
- It is possible to reuse all of our lintels, providing that they are not damaged. Contact our technical team for more information

Note: Whilst the above information is intended to offer general guidance regarding typical applications, it should not be considered as comprehensive. Requirements not fully covered by the above should be referred to our technical services department for individual consideration.

Catnic

Pontypandy Industrial Estate Caerphilly CF83 3GL
United Kingdom
+44 (0)29 2033 7900

catnic.technical@tatasteelurope.com

catnic.com

Tata Steel UK Limited

18 Grosvenor Place, London, SW1X 7HS
Registered in England No. 02280000

Care has been taken to ensure that the contents of this publication are accurate, but Tata Steel Europe Limited and its subsidiaries, which includes Tata Steel UK Limited, do not accept responsibility or liability for errors or information that is found to be misleading. Before using products or services supplied or manufactured by Tata Steel Europe Limited and its subsidiaries, customers should satisfy themselves as to their suitability.

© Copyright 2026 Tata Steel UK Limited