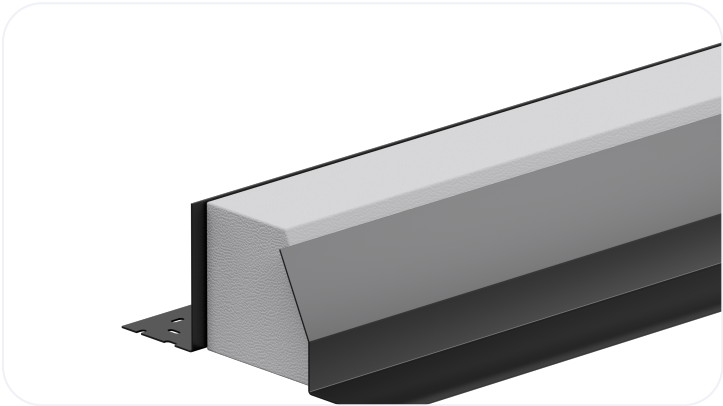


Heavy Duty Steel Lintel

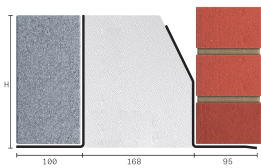
TH170/100

Wall Construction	CAVITY WALL
Inner Leaf	100-115
Outer Leaf	100-102
Cavity	170-185
Loading Conditions	HEAVY DUTY



Specification

Product Code	Standard Length (mm)	SWL (kN) 1:1/19:1	Weight (kg)	Nominal Height (mm)
TH170/1000750	750	32	10.25	154
TH170/1000900	900	32	12.30	154
TH170/1001050	1050	32	14.35	154
TH170/1001200	1200	32	16.40	154
TH170/1001350	1350	32	18.45	154
TH170/1001500	1500	32	20.51	154
TH170/1001650	1650	32	22.56	154
TH170/1001800	1800	32	24.61	154
TH170/1001950	1950	48	33.68	229
TH170/1002100	2100	48	36.27	229
TH170/1002250	2250	45	38.86	229
TH170/1002400	2400	45	41.45	229



All ratios are shown inner to outer

- The SWL (safe working load) is based on the total UDL (uniform distributed load) over maximum span using 150mm end bearings.
- Standard lengths are available in increments of 150mm at lengths up to 2400mm.
- Separate DPC tray required
- When using the Catnic TH and TX Open Back ranges with concrete floors, always ensure that the blockwork is built tight against the inner vertical face, and that a mortar joint is added to the top of the blockwork so that the floor units have an even spread over the inner flange of the lintel.
- Achieving a remarkably low Psi value ensures this Catnic lintel will always meet the performance criteria requirements of Appendix Q found in SAP 2012 providing easy compliance with Part L of the Building Regulations

Note: Whilst the above information is intended to offer general guidance regarding typical applications, it should not be considered as comprehensive. Requirements not fully covered by the above should be referred to our technical services department for individual consideration.

Catnic

Pontypandy Industrial Estate Caerphilly CF83 3GL
United Kingdom

+44 (0)29 2033 7900

catnic.technical@tatasteeleurope.com

catnic.com

Tata Steel UK Limited

18 Grosvenor Place, London, SW1X 7HS

Registered in England No. 02280000

Care has been taken to ensure that the contents of this publication are accurate, but Tata Steel Europe Limited and its subsidiaries, which includes Tata Steel UK Limited, do not accept responsibility or liability for errors or information that is found to be misleading. Before using products or services supplied or manufactured by Tata Steel Europe Limited and its subsidiaries, customers should satisfy themselves as to their suitability.

© Copyright 2025 Tata Steel UK Limited