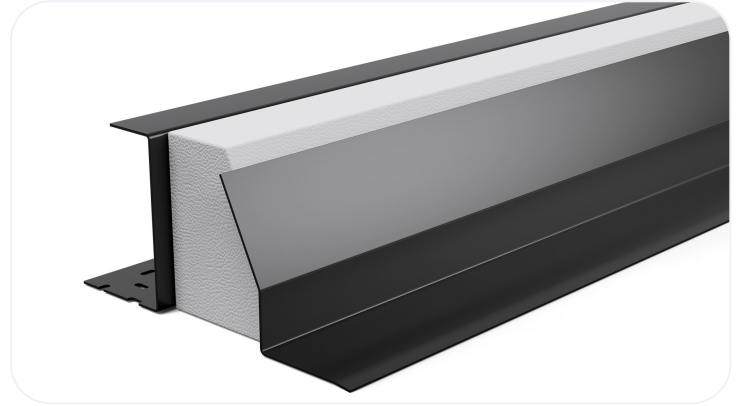


# Heavy Duty Steel Lintel

## TH130/100

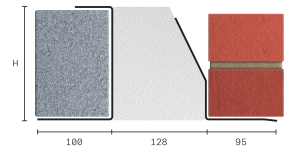
Steel lintel with unique thermal break for use in cavity wall construction, designed to support typical masonry, timber floor and roof loads found in most buildings and suitable for fairfaced inner leaf masonry. The easy to use open back profile allows masonry to be built up continuously on both outer and inner leaf, available in standard, heavy, and extra heavy duty from 90-205mm cavities. Fully insulated, with complete thermal break, integral plaster key and Catnic's signature black powder coating.



<b>Wall Construction</b>	CAVITY WALL
<b>Inner Leaf</b>	100-115
<b>Outer Leaf</b>	100-102
<b>Cavity</b>	130-145
<b>Loading Conditions</b>	HEAVY DUTY

## Specification

Product Code	Standard Length (mm)	SWL (kN) 1:1/19:1	Weight (kg)	Nominal Height (mm)
TH130/1000750	750	32	10.12	154
TH130/1000900	900	32	12.14	154
TH130/1001050	1050	32	14.16	154
TH130/1001200	1200	32	16.19	154
TH130/1001350	1350	32	18.21	154
TH130/1001500	1500	32	20.24	154
TH130/1001650	1650	32	22.26	154
TH130/1001800	1800	32	24.28	154
TH130/1001950	1950	48	33.13	229
TH130/1002100	2100	48	35.68	229
TH130/1002250	2250	45	38.23	229
TH130/1002400	2400	45	40.78	229



All ratios are shown inner to outer

- The SWL (safe working load) is based on the total UDL (uniform distributed load) over maximum span using 150mm end bearings.
- Standard lengths are available in 150mm increments up to 2400mm.
- Separate DPC tray required
- When using the Catnic TH and TX Open Back ranges with concrete floors, always ensure that the blockwork is built tight against the inner vertical face, and that a mortar joint is added to the top of the blockwork so that the floor units have an even spread over the inner flange of the lintel.
- Achieving a remarkably low Psi value ensures this Catnic lintel will always meet the performance criteria requirements of Appendix Q found in SAP 2012 providing easy compliance with Part L of the Building Regulations

## Benefits

- Psi values of 0.02 to 0.05 W/mK
- Duplex Corrosion Protection
- Integral Plaster Key
- Integral Insulation

- Made in the UK for a lower carbon footprint and certified to BES 6001 Responsible Sourcing standard.
- Made using lower carbon manufacturing
- Designed to maximise energy saving at home
- It is possible to reuse all of our lintels, providing that they are not damaged. Contact our technical team for more information

**Note:** Whilst the above information is intended to offer general guidance regarding typical applications, it should not be considered as comprehensive. Requirements not fully covered by the above should be referred to our technical services department for individual consideration.

### Catnic

Pontypandy Industrial Estate Caerphilly CF83 3GL  
United Kingdom

+44 (0)29 2033 7900

[catnic.technical@tatasteelurope.com](mailto:catnic.technical@tatasteelurope.com)

[catnic.com](http://catnic.com)

### Tata Steel UK Limited

18 Grosvenor Place, London, SW1X 7HS  
Registered in England No. 02280000

Care has been taken to ensure that the contents of this publication are accurate, but Tata Steel Europe Limited and its subsidiaries, which includes Tata Steel UK Limited, do not accept responsibility or liability for errors or information that is found to be misleading. Before using products or services supplied or manufactured by Tata Steel Europe Limited and its subsidiaries, customers should satisfy themselves as to their suitability.

© Copyright 2026 Tata Steel UK Limited