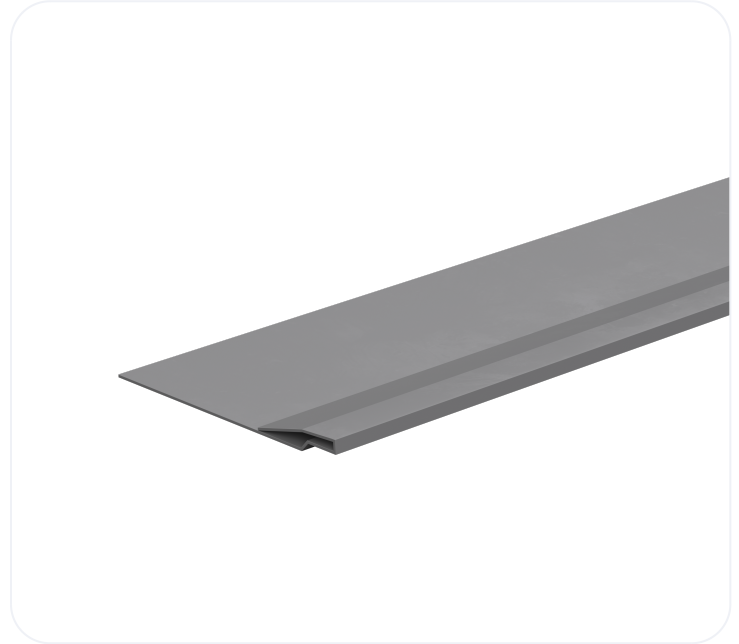


PVC-u Soffit Cladding

FCGREY

Lintel Soffitt Cladding is an optional cladding that provides extra protection, especially in coastal regions and in situations where much of the lintel soffit is exposed.

Wall Construction	N/A
Inner Leaf	N/A
Outer Leaf	N/A
Cavity	N/A
Loading Conditions	N/A DUTY



Specification

Product Code	Standard Length (mm)	SWL (kN)	Weight (kg)	Nominal Height (mm)
FCGREY0750	750	N/A	0.21	N/A
FCGREY0900	900	N/A	0.25	N/A
FCGREY1050	1050	N/A	0.29	N/A
FCGREY1200	1200	N/A	0.33	N/A
FCGREY1350	1350	N/A	0.37	N/A
FCGREY1500	1500	N/A	0.41	N/A
FCGREY1650	1650	N/A	0.46	N/A
FCGREY1800	1800	N/A	0.50	N/A
FCGREY1950	1950	N/A	0.54	N/A
FCGREY2100	2100	N/A	0.58	N/A
FCGREY2250	2250	N/A	0.63	N/A
FCGREY2400	2400	N/A	0.66	N/A
FCGREY2550	2550	N/A	0.71	N/A
FCGREY2700	2700	N/A	0.74	N/A
FCGREY2850	2850	N/A	0.79	N/A
FCGREY3000	3000	N/A	0.82	N/A
FCGREY3300	3300	N/A	0.91	N/A
FCGREY3600	3600	N/A	0.99	N/A
FCGREY3900	3900	N/A	1.07	N/A
FCGREY4200	4200	N/A	1.16	N/A
FCGREY4575	4575	N/A	1.26	N/A
FCGREY4800	4800	N/A	1.33	N/A
FCGREY5100	5100	N/A	1.41	N/A

- All external wall lintels fitted with lintel cladding must be installed with a flexible damp proof course (DPC) ensuring that the DPC projects beyond the front face of the cladding.

Benefits

- Lintel Soffitt Cladding is an optional cladding that provides extra protection, especially in coastal regions and in situations where much of the lintel soffit is exposed.
- Suitable for use with Cougar lintels (CG, CH, CX) timber frame lintels (CTF5, CTF7, CTF9, CN23), thermally broken lintels (TS, TH, TX) and External solid wall lintels (CN71 and CN81).

Note: Whilst the above information is intended to offer general guidance regarding typical applications, it should not be considered as comprehensive. Requirements not fully covered by the above should be referred to our technical services department for individual consideration.

Catnic

Pontypandy Industrial Estate Caerphilly CF83 3GL
United Kingdom
+44 (0)29 2033 7900

catnic.technical@tatasteeleurope.com

catnic.com

Tata Steel UK Limited

18 Grosvenor Place, London, SW1X 7HS
Registered in England No. 02280000

Care has been taken to ensure that the contents of this publication are accurate, but Tata Steel Europe Limited and its subsidiaries, which includes Tata Steel UK Limited, do not accept responsibility or liability for errors or information that is found to be misleading. Before using products or services supplied or manufactured by Tata Steel Europe Limited and its subsidiaries, customers should satisfy themselves as to their suitability.

© Copyright 2026 Tata Steel UK Limited