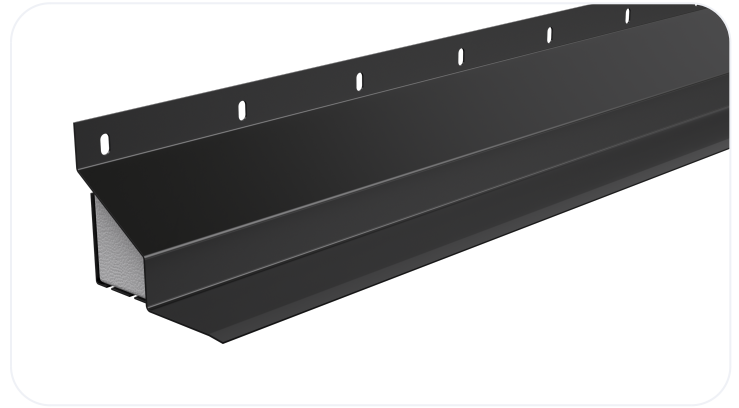


Standard Duty Steel Lintel CTJ90

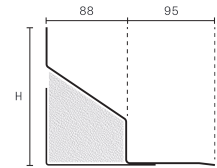
Standard duty steel lintels for use in thin joint masonry cavity wall construction with 102mm outer leaf. Inner leaf support is achieved through a standard Catnic box lintel and propping during construction is eliminated thanks to a unique plastic fixings connection. The CTJ range closes the cavity and removes the need for an additional cavity closer. Fully insulated, with integral plaster key and built in DPC thanks to Catnic's signature black powder coating.



Wall Construction	CAVITY WALL
Inner Leaf	N/A
Outer Leaf	100-102
Cavity	90-105
Loading Conditions	STANDARD DUTY

Specification

Product Code	Standard Length (mm)	SWL (kN)	Weight (kg)	Nominal Height (mm)
CTJ900750	750	5	5.07	149
CTJ900900	900	5	6.08	149
CTJ901050	1050	5	7.1	149
CTJ901200	1200	5	8.11	149
CTJ901350	1350	5	9.13	149
CTJ901500	1500	5	10.14	149
CTJ901650	1650	7	13	149
CTJ901800	1800	7	14.18	149
CTJ901950	1950	7	15.37	149
CTJ902100	2100	7	16.55	149
CTJ902250	2250	7	17.73	149
CTJ902400	2400	7	18.91	149
CTJ902550	2550	7	19.71	149
CTJ902700	2700	7	20.87	149
CTJ902850	2850	7	22.03	224
CTJ903000	3000	7	23.19	224
CTJ903300	3300	7	30	224
CTJ903600	3600	7	32.72	224



All ratios are shown inner to outer

- The SWL (safe working load) is based on the total UDL (uniform distributed load) over maximum span using 150mm end bearings.
- Standard lengths are available in 150mm increments up to 3000, 300mm increments from 3000mm to 3600mm.

Benefits

- Duplex Corrosion Protection
- Integral Plaster Key
- Built-In DPC
- Integral Insulation

- Made in the UK for a lower carbon footprint and certified to BES 6001 Responsible Sourcing standard.
- Made using lower carbon manufacturing
- It is possible to reuse all of our lintels, providing that they are not damaged. Contact our technical team for more information

Note: Whilst the above information is intended to offer general guidance regarding typical applications, it should not be considered as comprehensive. Requirements not fully covered by the above should be referred to our technical services department for individual consideration.

Catnic

Pontypandy Industrial Estate Caerphilly CF83 3GL
United Kingdom
+44 (0)29 2033 7900
catnic.technical@tatasteeleurope.com
catnic.com

Tata Steel UK Limited

18 Grosvenor Place, London, SW1X 7HS
Registered in England No. 02280000

Care has been taken to ensure that the contents of this publication are accurate, but Tata Steel Europe Limited and its subsidiaries, which includes Tata Steel UK Limited, do not accept responsibility or liability for errors or information that is found to be misleading. Before using products or services supplied or manufactured by Tata Steel Europe Limited and its subsidiaries, customers should satisfy themselves as to their suitability.

© Copyright 2026 Tata Steel UK Limited