

Standard Duty Steel Lintel CTJ90

Wall Construction

Inner Leaf

Outer Leaf

Cavity

Loading Details

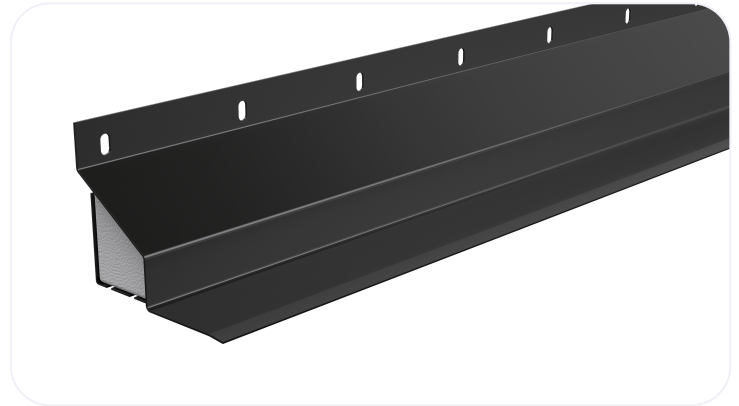
CAVITY WALL

N/A

100-102

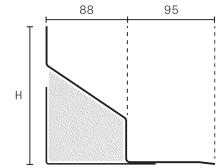
90-105

STANDARD



Specification

Product Code	Standard Length (mm)	SWL (kN)	Weight (kg)	Nominal Height (mm)
CTJ900750	750	5	5.07	149
CTJ900900	900	5	6.08	149
CTJ901050	1050	5	7.1	149
CTJ901200	1200	5	8.11	149
CTJ901350	1350	5	9.13	149
CTJ901500	1500	5	10.14	149
CTJ901650	1650	7	13	149
CTJ901800	1800	7	14.18	149
CTJ901950	1950	7	15.37	149
CTJ902100	2100	7	16.55	149
CTJ902250	2250	7	17.73	149
CTJ902400	2400	7	18.91	149
CTJ902550	2550	7	19.71	149
CTJ902700	2700	7	20.87	149
CTJ902850	2850	7	22.03	224
CTJ903000	3000	7	23.19	224
CTJ903300	3300	7	30	224
CTJ903600	3600	7	32.72	224



All ratios are shown inner to outer

- The SWL (safe working load) is based on the total UDL (uniform distributed load) over maximum span using 150mm end bearings.
- Standard lengths are available in 150mm increments up to 3000, 300mm increments from 3000mm to 3600mm.

Note: Whilst the above information is intended to offer general guidance regarding typical applications, it should not be considered as comprehensive. Requirements not fully covered by the above should be referred to our technical services department for individual consideration.

Catnic

Pontypandy Industrial Estate Caerphilly CF83 3GL United Kingdom

+44 (0)29 2033 7900 | catnic.technical@tatasteeleurope.com

www.catnic.com

Care has been taken to ensure that the contents of this publication are accurate, but Tata Steel Europe Limited and its subsidiaries, which includes Tata Steel UK Limited, do not accept responsibility or liability for errors or information that is found to be misleading. Before using products or services supplied or manufactured by Tata Steel Europe Limited and its subsidiaries, customers should satisfy themselves as to their suitability.

© Copyright 2024 Tata Steel UK Limited.