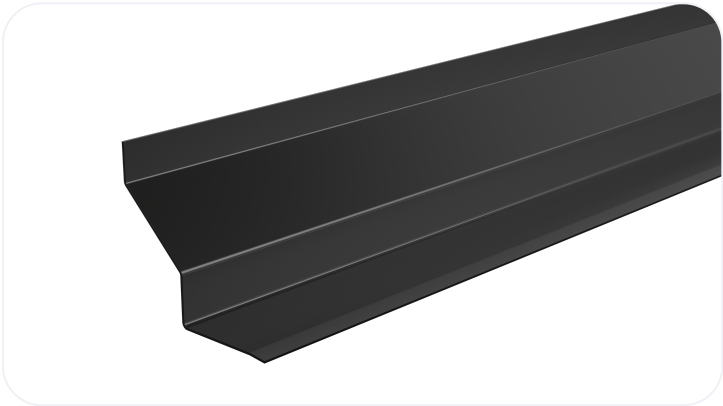


Standard Duty Steel Lintel

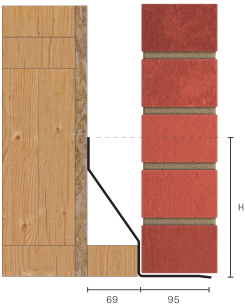
CTF7

Wall Construction	TIMBER FRAME
Inner Leaf	N/A
Outer Leaf	100-102
Cavity	70-85
Loading Conditions	STANDARD DUTY



Specification

Product Code	Standard Length (mm)	SWL (kN)	Weight (kg)	Nominal Height (mm)
CTF70750	750	5	2.51	145
CTF70900	900	5	3.02	145
CTF71050	1050	5	3.52	145
CTF71200	1200	5	4.02	145
CTF71350	1350	5	4.52	145
CTF71500	1500	5	5.03	145
CTF71650	1650	7	4.02	145
CTF71800	1800	7	7.54	145
CTF71950	1950	7	9.18	187
CTF72100	2100	7	9.89	187
CTF72250	2250	7	10.60	187
CTF72400	2400	7	11.30	187
CTF72550	2550	9	18.67	261
CTF72700	2700	9	19.76	261
CTF72850	2850	9	20.86	261
CTF73000	3000	9	21.96	261
CTF73300	3300	9	24.16	261
CTF73600	3600	9	26.35	261
CTF73900	3900	10	35.41	261
CTF74200	4200	10	38.14	261
CTF74575	4575	10	41.54	261
CTF74800	4800	10	43.58	261



All ratios are shown inner to outer

- The SWL (safe working load) is based on the total UDL (uniform distributed load) over maximum span using 150mm end bearings.
- Standard lengths are available in increments of 150mm at lengths up to 3000mm, 300mm at lengths from 3000mm - 4800mm (including 4575 but excluding 4500mm).
- CTF lintels should be suitably propped and secured with provided restraint clips and timber batten (not provided) during construction.

Note: Whilst the above information is intended to offer general guidance regarding typical applications, it should not be considered as comprehensive. Requirements not fully covered by the above should be referred to our technical services department for individual consideration.

Catnic

Pontypandy Industrial Estate Caerphilly CF83 3GL
United Kingdom

+44 (0)29 2033 7900

catnic.technical@tatasteeleurope.com

catnic.com

Tata Steel UK Limited

18 Grosvenor Place, London, SW1X 7HS

Registered in England No. 02280000

Care has been taken to ensure that the contents of this publication are accurate, but Tata Steel Europe Limited and its subsidiaries, which includes Tata Steel UK Limited, do not accept responsibility or liability for errors or information that is found to be misleading. Before using products or services supplied or manufactured by Tata Steel Europe Limited and its subsidiaries, customers should satisfy themselves as to their suitability.

© Copyright 2025 Tata Steel UK Limited