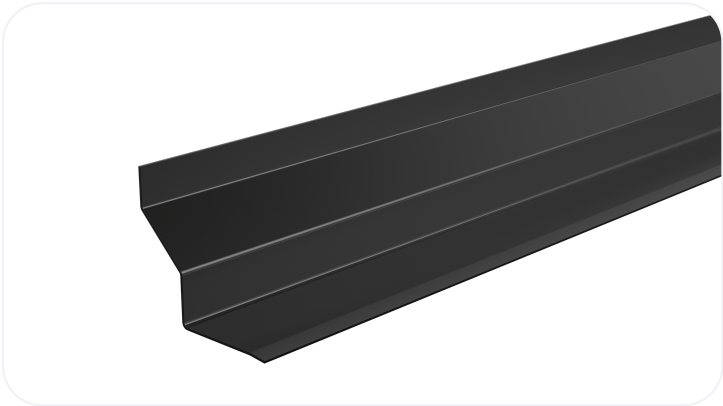


# Standard Duty Steel Lintel

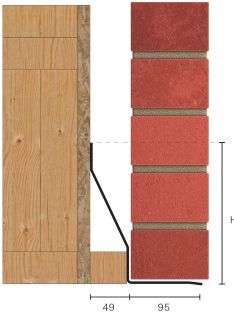
## CTF5

Wall Construction	TIMBER FRAME
Inner Leaf	N/A
Outer Leaf	100-102
Cavity	50-65
Loading Conditions	STANDARD DUTY



### Specification

Product Code	Standard Length (mm)	SWL (kN)	Weight (kg)	Nominal Height (mm)
CTF50750	750	5	2.27	128
CTF50900	900	5	2.73	128
CTF51050	1050	5	3.18	128
CTF51200	1200	5	3.63	128
CTF51350	1350	5	4.09	128
CTF51500	1500	5	4.55	128
CTF51650	1650	7	6.24	128
CTF51800	1800	7	6.80	128
CTF51950	1950	7	8.76	183
CTF52100	2100	7	9.43	183
CTF52250	2250	7	10.10	183
CTF52400	2400	7	10.78	183
CTF52550	2550	7	14.31	183
CTF52700	2700	7	15.15	183
CTF52850	2850	7	15.99	183
CTF53000	3000	9	21.15	256
CTF53300	3300	9	23.27	256
CTF53600	3600	9	25.38	256
CTF53900	3900	10	34.09	256
CTF54200	4200	10	36.71	256
CTF54575	4575	10	39.99	256
CTF54800	4800	10	41.95	256



All ratios are shown inner to outer

- The SWL (safe working load) is based on the total UDL (uniform distributed load) over maximum span using 150mm end bearings.
- Standard lengths are available in increments of 150mm at lengths up to 3000mm, 300mm at lengths from 3000mm - 4800mm (including 4575 but excluding 4500mm).
- CTF lintels should be suitably propped and secured with provided restraint clips and timber batten (not provided) during construction.

**Note:** Whilst the above information is intended to offer general guidance regarding typical applications, it should not be considered as comprehensive. Requirements not fully covered by the above should be referred to our technical services department for individual consideration.

#### **Catnic**

Pontypandy Industrial Estate Caerphilly CF83 3GL  
United Kingdom

+44 (0)29 2033 7900

[catnic.technical@tatasteeleurope.com](mailto:catnic.technical@tatasteeleurope.com)

[catnic.com](https://catnic.com)

#### **Tata Steel UK Limited**

18 Grosvenor Place, London, SW1X 7HS

Registered in England No. 02280000

Care has been taken to ensure that the contents of this publication are accurate, but Tata Steel Europe Limited and its subsidiaries, which includes Tata Steel UK Limited, do not accept responsibility or liability for errors or information that is found to be misleading. Before using products or services supplied or manufactured by Tata Steel Europe Limited and its subsidiaries, customers should satisfy themselves as to their suitability.

© Copyright 2025 Tata Steel UK Limited