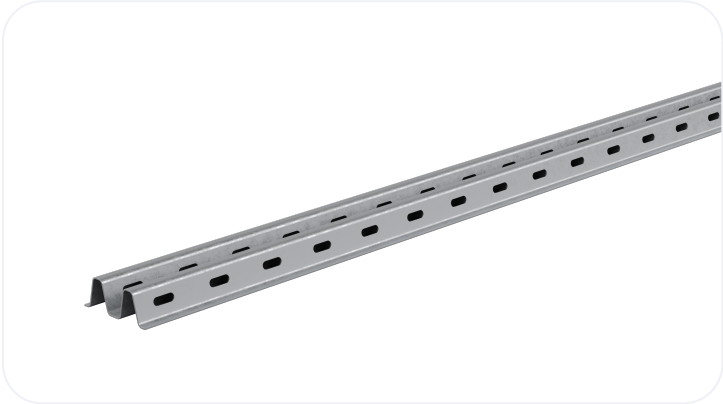


Extra Light Duty Steel Lintel CN92

Light duty steel lintel for use in masonry wall construction for internal load bearing walls 75mm and 100mm. Offers a cost effective solution for extra light duty loads. Suitable for nominal domestic loading. Manufactured from galvanised steel.



Wall Construction	INTERNAL WALL
Inner Leaf	75
Outer Leaf	N/A
Cavity	N/A
Loading Conditions	EXTRA LIGHT DUTY

Specification

Product Code	Standard Length (mm)	SWL (kN)	Weight (kg)	Nominal Height (mm)
CN921050	1050	7	1.26	25
CN921200	1200	7	1.44	25

- The SWL (safe working load) is based on the total UDL (uniform distributed load) over maximum span using 150mm end bearings.
- Standard lengths are available in 150mm increments.



All ratios are shown inner to outer

Benefits

- Galvanised Steel
- Integral Plaster Key
- Integral Insulation

- Made in the UK for a lower carbon footprint and certified to BES 6001 Responsible Sourcing standard.
- Made using lower carbon manufacturing
- It is possible to reuse all of our lintels, providing that they are not damaged. Contact our technical team for more information

Note: Whilst the above information is intended to offer general guidance regarding typical applications, it should not be considered as comprehensive. Requirements not fully covered by the above should be referred to our technical services department for individual consideration.

Catnic

Pontypandy Industrial Estate Caerphilly CF83 3GL
United Kingdom
+44 (0)29 2033 7900

catnic.technical@tatasteeeurope.com

catnic.com

Tata Steel UK Limited

18 Grosvenor Place, London, SW1X 7HS
Registered in England No. 02280000

Care has been taken to ensure that the contents of this publication are accurate, but Tata Steel Europe Limited and its subsidiaries, which includes Tata Steel UK Limited, do not accept responsibility or liability for errors or information that is found to be misleading. Before using products or services supplied or manufactured by Tata Steel Europe Limited and its subsidiaries, customers should satisfy themselves as to their suitability.

© Copyright 2026 Tata Steel UK Limited