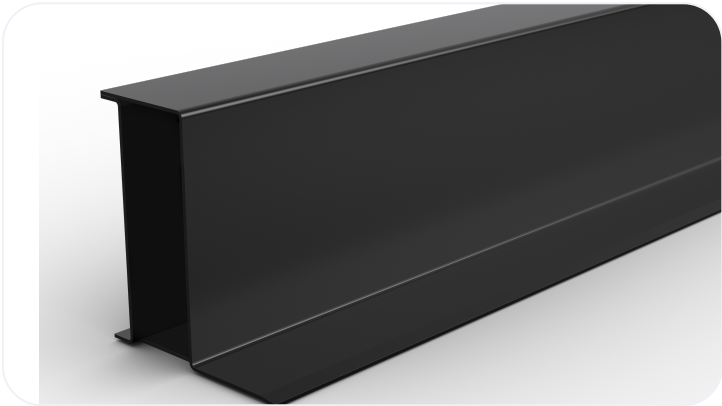


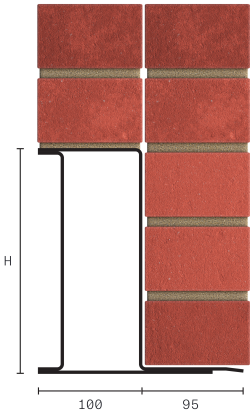
Heavy Duty Steel Lintel CN81C

Wall Construction	EXTERNAL SOLID WALL
Inner Leaf	N/A
Outer Leaf	200-215
Cavity	N/A
Loading Conditions	HEAVY DUTY



Specification

Product Code	Standard Length (mm)	SWL (kN)	Weight (kg)	Nominal Height (mm)
CN81C2100	2100	54	38.18	219
CN81C2250	2250	54	40.91	219
CN81C2400	2400	54	43.63	219
CN81C2550	2550	54	46.36	219
CN81C2700	2700	54	49.09	219
CN81C2850	2850	47	51.81	219
CN81C3000	3000	47	54.54	219
CN81C3300	3300	47	59.99	219
CN81C3600	3600	39	65.45	219
CN81C3900	3900	29	70.90	219
CN81C4200	4200	29	76.36	219
CN81C4575	4575	29	83.17	219
CN81C4800	4800	26	87.26	219



All ratios are shown inner to outer

- The SWL (safe working load) is based on the total UDL (uniform distributed load) over maximum span using 150mm end bearings.
- Standard lengths are available in increments of 150mm at lengths up to 3000mm, 300mm at lengths from 3000mm to 4800mm (including 4575mm, but excluding 4500mm).

Note: Whilst the above information is intended to offer general guidance regarding typical applications, it should not be considered as comprehensive. Requirements not fully covered by the above should be referred to our technical services department for individual consideration.

Catnic
Pontypandy Industrial Estate Caerphilly CF83 3GL
United Kingdom
+44 (0)29 2033 7900
catnic.technical@tatasteeleurope.com
catnic.com

Tata Steel UK Limited
18 Grosvenor Place, London, SW1X 7HS
Registered in England No. 02280000

Care has been taken to ensure that the contents of this publication are accurate, but Tata Steel Europe Limited and its subsidiaries, which includes Tata Steel UK Limited, do not accept responsibility or liability for errors or information that is found to be misleading. Before using products or services supplied or manufactured by Tata Steel Europe Limited and its subsidiaries, customers should satisfy themselves as to their suitability.