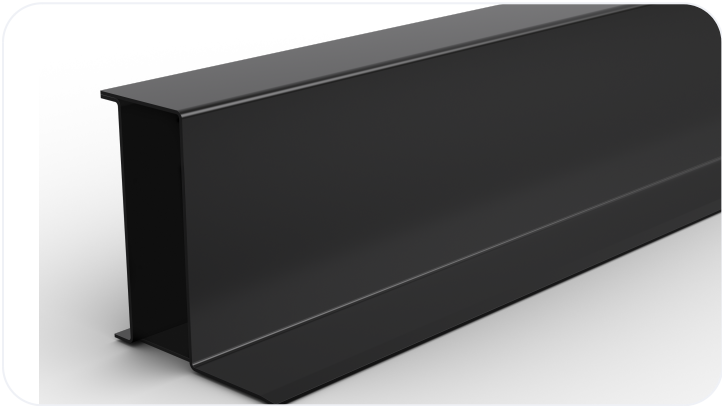


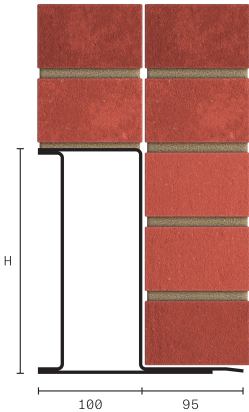
Standard Duty Steel Lintel CN81B

Wall Construction	EXTERNAL SOLID WALL
Inner Leaf	N/A
Outer Leaf	200-215
Cavity	N/A
Loading Conditions	STANDARD DUTY



Specification

Product Code	Standard Length (mm)	SWL (kN)	Weight (kg)	Nominal Height (mm)
CN81B2100	2100	29	31.65	219
CN81B2250	2250	29	33.91	219
CN81B2400	2400	29	36.17	219
CN81B2550	2550	29	38.43	219
CN81B2700	2700	29	40.69	219
CN81B2850	2850	29	42.95	219
CN81B3000	3000	29	45.21	219
CN81B3300	3300	29	49.73	219
CN81B3600	3600	29	54.25	219



All ratios are shown inner to outer

- The SWL (safe working load) is based on the total UDL (uniform distributed load) over maximum span using 150mm end bearings.
- Standard lengths are available in 150mm increments up to 3000, 300mm increments from 3000mm to 3600mm.

Note: Whilst the above information is intended to offer general guidance regarding typical applications, it should not be considered as comprehensive. Requirements not fully covered by the above should be referred to our technical services department for individual consideration.

Catnic
Pontypandy Industrial Estate Caerphilly CF83 3GL
United Kingdom
+44 (0)29 2033 7900
catnic.technical@tatasteeleurope.com
catnic.com

Tata Steel UK Limited
18 Grosvenor Place, London, SW1X 7HS
Registered in England No. 02280000

Care has been taken to ensure that the contents of this publication are accurate, but Tata Steel Europe Limited and its subsidiaries, which includes Tata Steel UK Limited, do not accept responsibility or liability for errors or information that is found to be misleading. Before using products or services supplied or manufactured by Tata Steel Europe Limited and its subsidiaries, customers should satisfy themselves as to their suitability.

© Copyright 2025 Tata Steel UK Limited