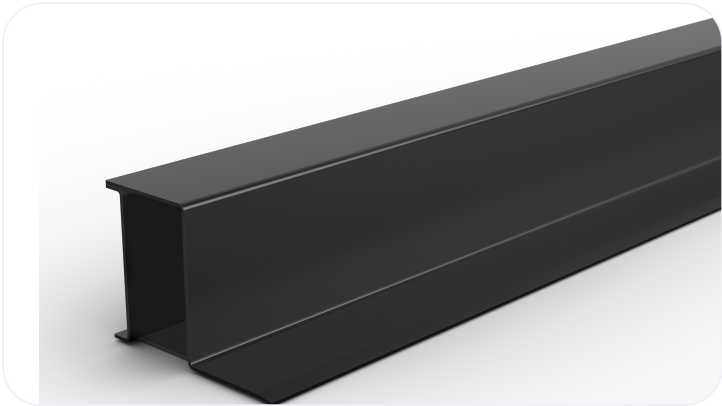


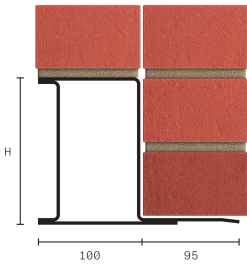
# Standard Duty Steel Lintel CN71A

Wall Construction	EXTERNAL SOLID WALL
Inner Leaf	N/A
Outer Leaf	200-215
Cavity	N/A
Loading Conditions	STANDARD DUTY



## Specification

Product Code	Standard Length (mm)	SWL (kN)	Weight (kg)	Nominal Height (mm)
CN71A0900	900	29	8.63	143
CN71A1050	1050	29	10.07	143
CN71A1200	1200	29	11.51	143
CN71A1350	1350	29	12.95	143
CN71A1500	1500	29	13.39	143
CN71A1650	1650	27	15.82	143
CN71A1800	1800	27	17.26	143
CN71A1950	1950	27	18.70	143
CN71A2100	2100	27	20.14	143
CN71A2250	2250	20	21.57	143
CN71A2400	2400	20	23.02	143
CN71A2550	2550	20	24.45	143
CN71A2700	2700	20	25.89	143



All ratios are shown inner to outer

- The SWL (safe working load) is based on the total UDL (uniform distributed load) over maximum span using 150mm end bearings.
- Standard lengths are available in 150mm increments up to 2700mm.

**Note:** Whilst the above information is intended to offer general guidance regarding typical applications, it should not be considered as comprehensive. Requirements not fully covered by the above should be referred to our technical services department for individual consideration.

**Catnic**  
Pontypandy Industrial Estate Caerphilly CF83 3GL  
United Kingdom  
+44 (0)29 2033 7900  
[catnic.technical@tatasteeleurope.com](mailto:catnic.technical@tatasteeleurope.com)  
[catnic.com](http://catnic.com)

**Tata Steel UK Limited**  
18 Grosvenor Place, London, SW1X 7HS  
Registered in England No. 02280000

Care has been taken to ensure that the contents of this publication are accurate, but Tata Steel Europe Limited and its subsidiaries, which includes Tata Steel UK Limited, do not accept responsibility or liability for errors or information that is found to be misleading. Before using products or services supplied or manufactured by Tata Steel Europe Limited and its subsidiaries, customers should satisfy themselves as to their suitability.