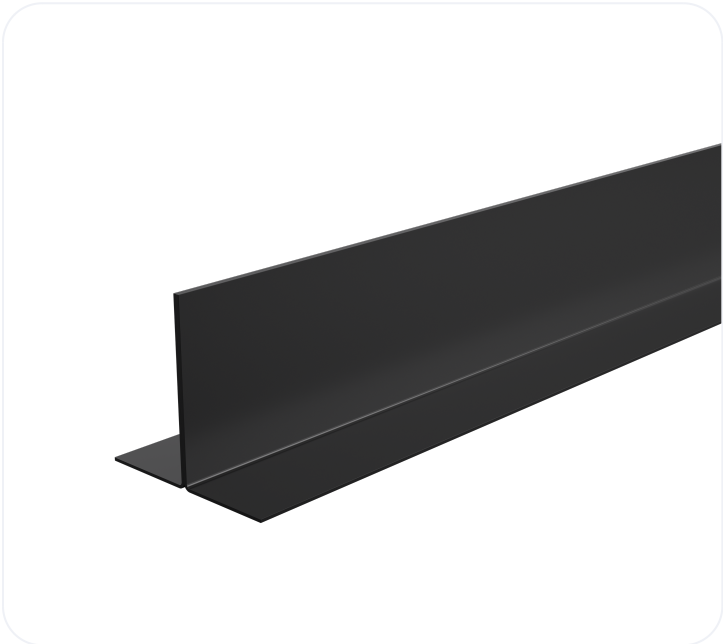


# Standard Duty Steel Lintel CN51C

Wall Construction	EXTERNAL SOLID WALL
Inner Leaf	N/A
Outer Leaf	200-215
Cavity	N/A
Loading Conditions	STANDARD DUTY



## Specification

Product Code	Standard Length (mm)	SWL (kN)	Weight (kg)	Nominal Height (mm)
CN51C2100	2100	12	25.75	167
CN51C2400	2400	12	29.42	167
CN51C2700	2700	12	33.10	167

- The SWL (safe working load) is based on the total UDL (uniform distributed load) over maximum span using 150mm end bearings.
- Standard length are available from 2100mm to 2700mm in 300 mm increments.

**Note:** Whilst the above information is intended to offer general guidance regarding typical applications, it should not be considered as comprehensive. Requirements not fully covered by the above should be referred to our technical services department for individual consideration.

**Catnic**  
 Pontypandy Industrial Estate Caerphilly CF83 3GL  
 United Kingdom  
 +44 (0)29 2033 7900  
[catnic.technical@tatasteeleurope.com](mailto:catnic.technical@tatasteeleurope.com)  
[catnic.com](http://catnic.com)

**Tata Steel UK Limited**  
 18 Grosvenor Place, London, SW1X 7HS  
 Registered in England No. 02280000

Care has been taken to ensure that the contents of this publication are accurate, but Tata Steel Europe Limited and its subsidiaries, which includes Tata Steel UK Limited, do not accept responsibility or liability for errors or information that is found to be misleading. Before using products or services supplied or manufactured by Tata Steel Europe Limited and its subsidiaries, customers should satisfy themselves as to their suitability.

© Copyright 2025 Tata Steel UK Limited