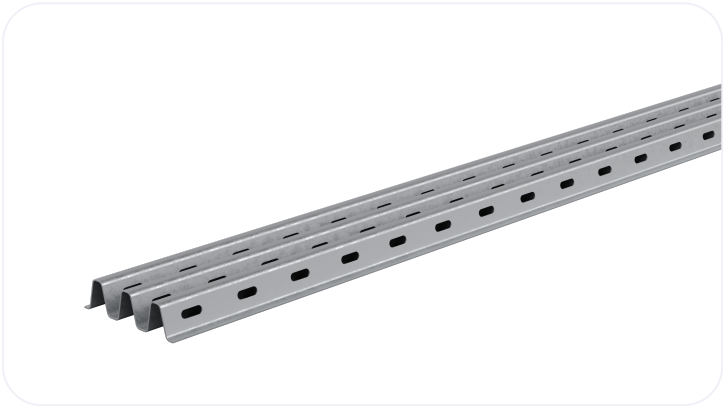


Extra Light Duty Steel Lintel CN102

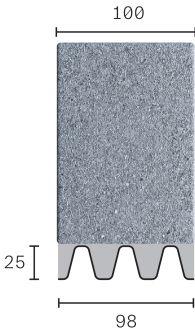
| | |
|--------------------|------------------|
| Wall Construction | INTERNAL WALL |
| Inner Leaf | 100 |
| Outer Leaf | N/A |
| Cavity | N/A |
| Loading Conditions | EXTRA LIGHT DUTY |



Specification

| Product Code | Standard Length (mm) | SWL (kN) | Weight (kg) | Nominal Height (mm) |
|--------------|----------------------|----------|-------------|---------------------|
| CN1021050 | 1050 | 7 | 1.89 | 25 |
| CN1021200 | 1200 | 7 | 2.16 | 25 |

- The SWL (safe working load) is based on the total UDL (uniform distributed load) over maximum span using 150mm end bearings.
- Standard lengths are available in 150mm increments.



All ratios are shown inner to outer

Note: Whilst the above information is intended to offer general guidance regarding typical applications, it should not be considered as comprehensive. Requirements not fully covered by the above should be referred to our technical services department for individual consideration.

Catnic
Pontypandy Industrial Estate Caerphilly CF83 3GL
United Kingdom
+44 (0)29 2033 7900
catnic.technical@tatasteeleurope.com
catnic.com

Tata Steel UK Limited
18 Grosvenor Place, London, SW1X 7HS
Registered in England No. 02280000

Care has been taken to ensure that the contents of this publication are accurate, but Tata Steel Europe Limited and its subsidiaries, which includes Tata Steel UK Limited, do not accept responsibility or liability for errors or information that is found to be misleading. Before using products or services supplied or manufactured by Tata Steel Europe Limited and its subsidiaries, customers should satisfy themselves as to their suitability.

© Copyright 2025 Tata Steel UK Limited