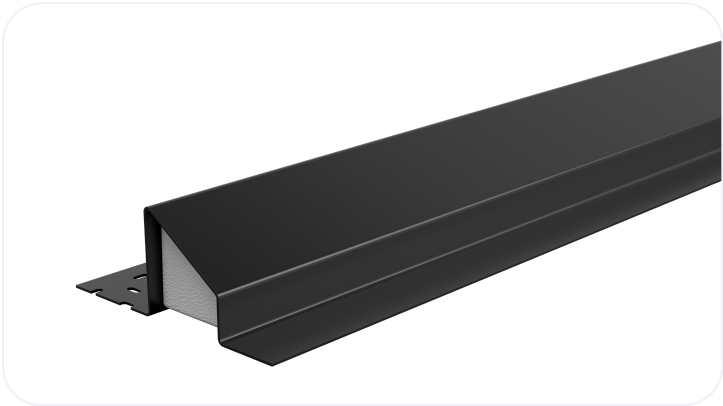


Standard Duty Steel Lintel

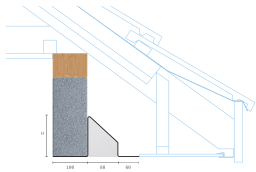
CGE90/100

Wall Construction	EAVES
Inner Leaf	100 - 115
Outer Leaf	N/A
Cavity	90 - 125
Loading Conditions	STANDARD DUTY



Specification

Product Code	Standard Length (mm)	SWL (kN)	Weight (kg)	Nominal Height (mm)
CGE90/1000750	750	20	4.96	97
CGE90/1000900	900	20	5.87	97
CGE90/1001050	1050	20	6.78	97
CGE90/1001200	1200	20	7.88	97
CGE90/1001350	1350	20	8.79	97
CGE90/1001500	1500	20	9.71	97
CGE90/1001650	1650	22	11.44	117
CGE90/1001800	1800	22	12.43	117
CGE90/1002100	2100	22	14.41	117
CGE90/1002400	2400	20	25.34	118
CGE90/1002700	2700	20	28.51	118



All ratios are shown inner to outer

- The SWL (safe working load) is based on the total UDL (uniform distributed load) over maximum span using 150mm end bearings.
- Standard lengths are available in 150mm increments up to 1800mm, 300mm increments from 1800mm to 2700mm.

Note: Whilst the above information is intended to offer general guidance regarding typical applications, it should not be considered as comprehensive. Requirements not fully covered by the above should be referred to our technical services department for individual consideration.

Catnic
Pontypandy Industrial Estate Caerphilly CF83 3GL
United Kingdom
+44 (0)29 2033 7900
catnic.technical@tatasteeleurope.com
catnic.com

Tata Steel UK Limited
18 Grosvenor Place, London, SW1X 7HS
Registered in England No. 02280000

Care has been taken to ensure that the contents of this publication are accurate, but Tata Steel Europe Limited and its subsidiaries, which includes Tata Steel UK Limited, do not accept responsibility or liability for errors or information that is found to be misleading. Before using products or services supplied or manufactured by Tata Steel Europe Limited and its subsidiaries, customers should satisfy themselves as to their suitability.

© Copyright 2025 Tata Steel UK Limited