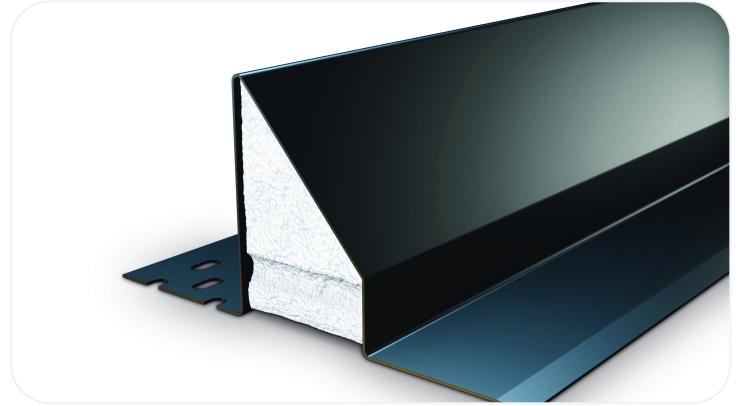


Standard Duty Steel Lintel CG90/100

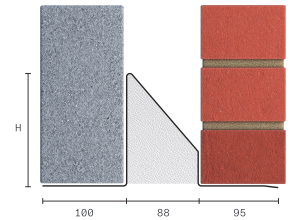
Steel lintel for use in 90mm standard duty masonry cavity wall construction, designed to support typical masonry, timber floor and roof loads found in most buildings and suitable for fairfaced inner leaf masonry. Open back profile allows masonry to be built up continuously on both outer and inner leaf. Manufactured from galvanised steel, supplied fully insulated, with integral plaster key and Catnic's signature black powder coating



Wall Construction	CAVITY WALL
Inner Leaf	100-115
Outer Leaf	100-102
Cavity	90-105
Loading Conditions	STANDARD DUTY

Specification

Product Code	Standard Length (mm)	SWL (kN) 1:1/3:1	Weight (kg)	Nominal Height (mm)
CG90/1000750	750	15	4.59	90
CG90/1000900	900	15	5.91	90
CG90/1001050	1050	15	6.82	90
CG90/1001200	1200	15	7.93	90
CG90/1001350	1350	15	8.85	90
CG90/1001500	1500	15	9.77	90
CG90/1001650	1650	18	13.16	136
CG90/1001800	1800	18	14.30	136
CG90/1001950	1950	20	16.68	136
CG90/1002100	2100	20	17.92	136
CG90/1002250	2250	22	20.55	175
CG90/1002400	2400	22	21.88	175
CG90/1002550	2550	26	26.45	215
CG90/1002700	2700	26	27.98	215
CG90/1002850	2850	26	37.51	224
CG90/1003000	3000	26	39.45	224
CG90/1003300	3300	26	43.34	224
CG90/1003600	3600	26	47.23	224



All ratios are shown inner to outer

- The SWL (safe working load) is based on the total UDL (uniform distributed load) over maximum span using 150mm end bearings.
- Standard lengths are available in increments of 150mm at lengths up to 3000mm, 300mm at lengths from 3000mm to 3600mm.

Benefits

- Duplex Corrosion Protection
- Integral Plaster Key
- Built-In DPC
- Integral Insulation

- Made in the UK for a lower carbon footprint and certified to BES 6001 Responsible Sourcing standard.
- Made using lower carbon manufacturing
- It is possible to reuse all of our lintels, providing that they are not damaged. Contact our technical team for more information

Note: Whilst the above information is intended to offer general guidance regarding typical applications, it should not be considered as comprehensive. Requirements not fully covered by the above should be referred to our technical services department for individual consideration.

Catnic

Pontypandy Industrial Estate Caerphilly CF83 3GL
United Kingdom
+44 (0)29 2033 7900
catnic.technical@tatasteeleurope.com
catnic.com

Tata Steel UK Limited

18 Grosvenor Place, London, SW1X 7HS
Registered in England No. 02280000

Care has been taken to ensure that the contents of this publication are accurate, but Tata Steel Europe Limited and its subsidiaries, which includes Tata Steel UK Limited, do not accept responsibility or liability for errors or information that is found to be misleading. Before using products or services supplied or manufactured by Tata Steel Europe Limited and its subsidiaries, customers should satisfy themselves as to their suitability.

© Copyright 2026 Tata Steel UK Limited