

Standard Duty Steel Lintel CG150/100

Wall Construction

Inner Leaf

Outer Leaf

Cavity

Loading Details

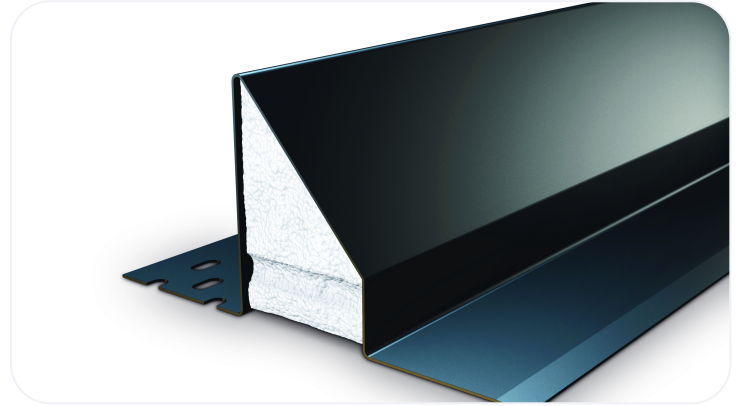
CAVITY WALL

100-115

100-102

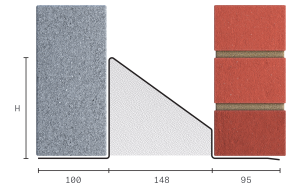
150-165

STANDARD



Specification

Product Code	Standard Length (mm)	SWL (kN) 1:1/3:1	Weight (kg)	Nominal Height (mm)
CG150/1000750	750	15	5.69	144
CG150/1000900	900	15	6.72	144
CG150/1001050	1050	15	7.75	144
CG150/1001200	1200	15	9.05	144
CG150/1001350	1350	15	10.08	144
CG150/1001500	1500	15	11.12	144
CG150/1001650	1650	18	15.15	144
CG150/1001800	1800	18	16.45	144
CG150/1001950	1950	20	18.77	148
CG150/1002100	2100	20	20.15	148
CG150/1002250	2250	22	25.63	188
CG150/1002400	2400	22	27.28	188
CG150/1002550	2550	26	35.97	222
CG150/1002700	2700	26	38.04	222
CG150/1002850	2850	26	40.11	223
CG150/1003000	3000	26	42.18	223
CG150/1003300	3300	26	46.32	223
CG150/1003600	3600	26	50.45	223



All ratios are shown inner to outer

- The SWL (safe working load) is based on the total UDL (uniform distributed load) over maximum span using 150mm end bearings.
- Standard lengths are available in increments of 150mm at lengths up to 3000mm, 300mm at lengths from 3000mm to 3600mm.

Note: Whilst the above information is intended to offer general guidance regarding typical applications, it should not be considered as comprehensive. Requirements not fully covered by the above should be referred to our technical services department for individual consideration.

Catnic

Pontypandy Industrial Estate Caerphilly CF83 3GL United Kingdom

+44 (0)29 2033 7900 | catnic.technical@tatasteeleurope.com

www.catnic.com

Care has been taken to ensure that the contents of this publication are accurate, but Tata Steel Europe Limited and its subsidiaries, which includes Tata Steel UK Limited, do not accept responsibility or liability for errors or information that is found to be misleading. Before using products or services supplied or manufactured by Tata Steel Europe Limited and its subsidiaries, customers should satisfy themselves as to their suitability.

© Copyright 2024 Tata Steel UK Limited.