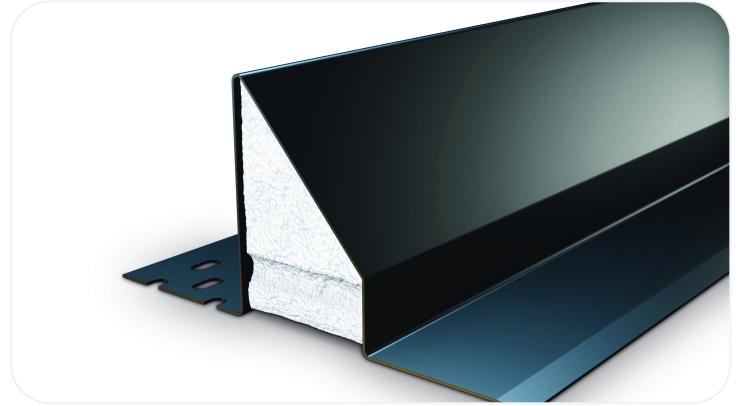


Standard Duty Steel Lintel CG110/125

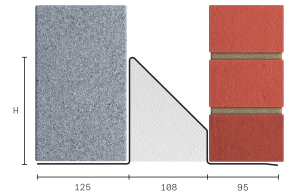
Steel lintel for use in 110mm standard duty masonry cavity wall construction, designed to support typical masonry, timber floor and roof loads found in most buildings and suitable for fairfaced inner leaf masonry. Open back profile allows masonry to be built up continuously on both outer and inner leaf. Manufactured from galvanised steel, supplied fully insulated, with integral plaster key and Catnic's signature black powder coating



Wall Construction	CAVITY WALL
Inner Leaf	125-140
Outer Leaf	100-102
Cavity	110-125
Loading Conditions	STANDARD DUTY

Specification

Product Code	Standard Length (mm)	SWL (kN) 1:1/3:1	Weight (kg)	Nominal Height (mm)
CG110/1250900	900	12	6.43	147
CG110/1251200	1200	12	8.57	147
CG110/1251500	1500	17	15.12	182
CG110/1251800	1800	17	18.14	182
CG110/1252100	2100	20	30.21	225
CG110/1252400	2400	20	34.52	225
CG110/1252700	2700	26	38.84	225
CG110/1253000	3000	26	43.16	225



All ratios are shown inner to outer

- ** Channel to inner leaf
- The SWL (safe working load) is based on the total UDL (uniform distributed load) over maximum span using 150mm end bearings.
- Standard lengths are available in increments of 3000mm at lengths up to 3000mm.

Benefits

- Duplex Corrosion Protection
- Integral Plaster Key
- Built-In DPC
- Integral Insulation

- Made in the UK for a lower carbon footprint and certified to BES 6001 Responsible Sourcing standard.
- Made using lower carbon manufacturing
- It is possible to reuse all of our lintels, providing that they are not damaged. Contact our technical team for more information

Note: Whilst the above information is intended to offer general guidance regarding typical applications, it should not be considered as comprehensive. Requirements not fully covered by the above should be referred to our technical services department for individual consideration.

Catnic

Pontypandy Industrial Estate Caerphilly CF83 3GL
United Kingdom
+44 (0)29 2033 7900
catnic.technical@tatasteeleurope.com
catnic.com

Tata Steel UK Limited

18 Grosvenor Place, London, SW1X 7HS
Registered in England No. 02280000

Care has been taken to ensure that the contents of this publication are accurate, but Tata Steel Europe Limited and its subsidiaries, which includes Tata Steel UK Limited, do not accept responsibility or liability for errors or information that is found to be misleading. Before using products or services supplied or manufactured by Tata Steel Europe Limited and its subsidiaries, customers should satisfy themselves as to their suitability.

© Copyright 2026 Tata Steel UK Limited