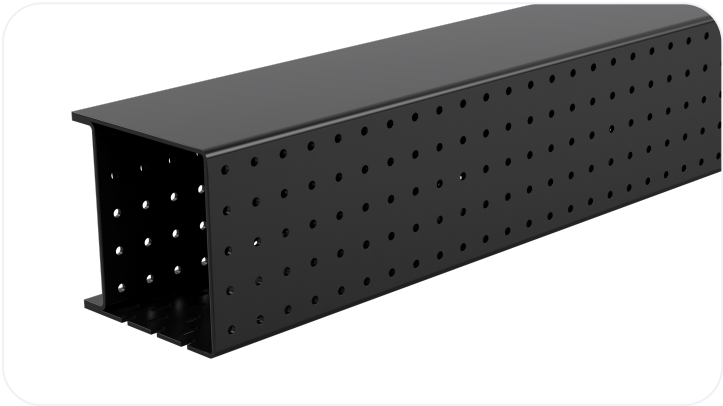


Extra Heavy Duty Steel Lintel

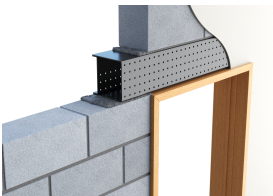
BXD140

Wall Construction	INTERNAL WALL
Inner Leaf	140
Outer Leaf	N/A
Cavity	N/A
Loading Conditions	EXTRA HEAVY DUTY



Specification

Product Code	Standard Length (mm)	SWL (kN)	Weight (kg)	Nominal Height (mm)
BXD1401050	1050	47	11.47	143
BXD1401200	1200	47	13.10	143
BXD1401350	1350	47	14.74	143
BXD1401500	1500	47	16.38	143
BXD1401650	1650	59	28.23	219
BXD1401800	1800	59	30.80	219
BXD1401950	1950	59	33.36	219
BXD1402100	2100	59	35.93	219
BXD1402250	2250	59	38.50	219
BXD1402400	2400	59	41.06	219
BXD1402550	2550	59	43.63	219
BXD1402700	2700	59	46.20	219



- The SWL (safe working load) is based on the total UDL (uniform distributed load) over maximum span using 150mm end bearings.
- Standard lengths are available in increments of 150mm at lengths up to 3000mm, 300mm at lengths from 3000mm to 4800mm (including 4575mm, but excluding 4500mm).

Note: Whilst the above information is intended to offer general guidance regarding typical applications, it should not be considered as comprehensive. Requirements not fully covered by the above should be referred to our technical services department for individual consideration.

Catnic
Pontypandy Industrial Estate Caerphilly CF83 3GL
United Kingdom
+44 (0)29 2033 7900
catnic.technical@tatasteeleurope.com
catnic.com

Tata Steel UK Limited
18 Grosvenor Place, London, SW1X 7HS
Registered in England No. 02280000

Care has been taken to ensure that the contents of this publication are accurate, but Tata Steel Europe Limited and its subsidiaries, which includes Tata Steel UK Limited, do not accept responsibility or liability for errors or information that is found to be misleading. Before using products or services supplied or manufactured by Tata Steel Europe Limited and its subsidiaries, customers should satisfy themselves as to their suitability.

© Copyright 2025 Tata Steel UK Limited