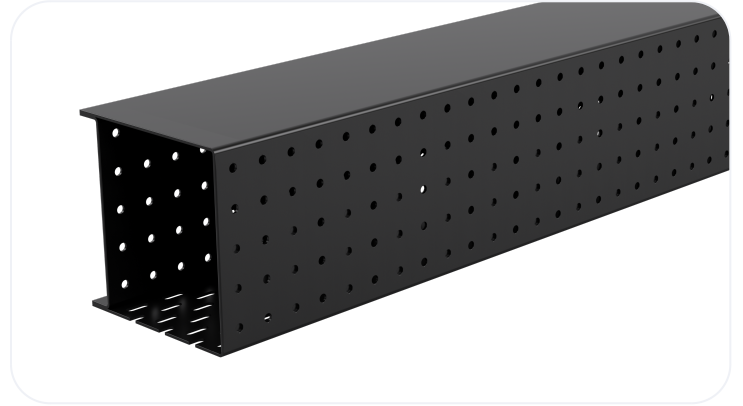


Heavy Duty Steel Lintel

BHD140

Wall Construction	INTERNAL WALL
Inner Leaf	140
Outer Leaf	N/A
Cavity	N/A
Loading Details	HEAVY



Specification

Product Code	Standard Length (mm)	SWL (kN)	Weight (kg)	Nominal Height (mm)
BHD1401050	1050	29	9.08	143
BHD1401200	1200	29	10.38	143
BHD1401350	1350	29	11.68	143
BHD1401500	1500	29	12.98	143
BHD1401650	1650	39	17.99	143
BHD1401800	1800	39	19.62	143
BHD1401950	1950	39	21.26	143
BHD1402100	2100	39	22.89	143
BHD1402250	2250	39	29.36	219
BHD1402400	2400	39	31.32	219
BHD1402550	2550	39	33.28	219
BHD1402700	2700	39	35.24	219
BHD1402850	2850	51	46.11	219
BHD1403000	3000	51	48.54	219
BHD1403300	3300	51	53.39	219
BHD1403600	3600	51	58.25	219
BHD1403900	3900	51	83.85	295
BHD1404200	4200	51	90.30	295
BHD1404575	4575	51	98.36	295
BHD1404800	4800	51	103.20	295

- The SWL (safe working load) is based on the total UDL (uniform distributed load) over maximum span using 150mm end bearings.
- Standard lengths are available in increments of 150mm at lengths up to 3000mm, 300mm at lengths from 3000mm to 4800mm (including 4575mm, but excluding 4500mm).

Note: Whilst the above information is intended to offer general guidance regarding typical applications, it should not be considered as comprehensive. Requirements not fully covered by the above should be referred to our technical services department for individual consideration.

Catnic

Pontypandy Industrial Estate Caerphilly CF83 3GL United Kingdom

+44 (0)29 2033 7900 | catnic.technical@tatasteeleurope.com

www.catnic.com

Care has been taken to ensure that the contents of this publication are accurate, but Tata Steel Europe Limited and its subsidiaries, which includes Tata Steel UK Limited, do not accept responsibility or liability for errors or information that is found to be misleading. Before using products or services supplied or manufactured by Tata Steel Europe Limited and its subsidiaries, customers should satisfy themselves as to their suitability.

© Copyright 2024 Tata Steel UK Limited.