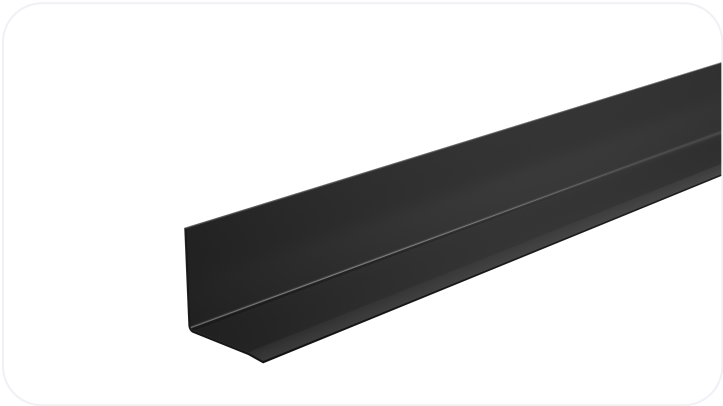


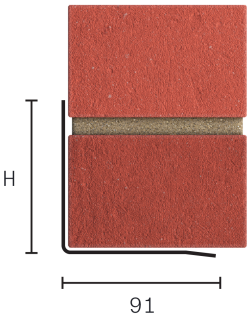
Standard Duty Steel Lintel ANG

Wall Construction	SINGLE LEAF WALL
Inner Leaf	N/A
Outer Leaf	100-102
Cavity	N/A
Loading Conditions	STANDARD DUTY



Specification

Product Code	Standard Length (mm)	SWL (kN)	Weight (kg)	Nominal Height (mm)
ANG0900	900	4	2.42	88
ANG1050	1050	4	2.82	88
ANG1200	1200	4	3.23	88
ANG1350	1350	5	4.58	131
ANG1500	1500	5	5.09	131
ANG1650	1650	7	6.53	167
ANG1800	1800	7	7.13	167
ANG1950	1950	7	7.72	167
ANG2100	2100	7	8.32	167
ANG2250	2250	10	10.60	215
ANG2400	2400	10	11.30	215
ANG2550	2550	15	18.54	215
ANG2700	2700	15	19.63	215
ANG2850	2850	15	20.72	215
ANG3000	3000	15	21.81	215
ANG3300	3300	15	30.89	213
ANG3600	3600	15	33.70	213
ANG3900	3900	15	36.50	213



All ratios are shown inner to outer

- The SWL (safe working load) is based on the total UDL (uniform distributed load) over maximum span using 150mm end bearings.
- Standard lengths are available in increments of 150mm at lengths up to 3000mm, 300mm at 3000mm to 3900mm
- ANG lintels should be suitably propped and laterally restrained during construction.

Note: Whilst the above information is intended to offer general guidance regarding typical applications, it should not be considered as comprehensive. Requirements not fully covered by the above should be referred to our technical services department for individual consideration.

Catnic

Pontypandy Industrial Estate Caerphilly CF83 3GL
United Kingdom
+44 (0)29 2033 7900

catnic.technical@tatasteeleurope.com

catnic.com

Tata Steel UK Limited

18 Grosvenor Place, London, SW1X 7HS
Registered in England No. 02280000

Care has been taken to ensure that the contents of this publication are accurate, but Tata Steel Europe Limited and its subsidiaries, which includes Tata Steel UK Limited, do not accept responsibility or liability for errors or information that is found to be misleading. Before using products or services supplied or manufactured by Tata Steel Europe Limited and its subsidiaries, customers should satisfy themselves as to their suitability.

© Copyright 2025 Tata Steel UK Limited