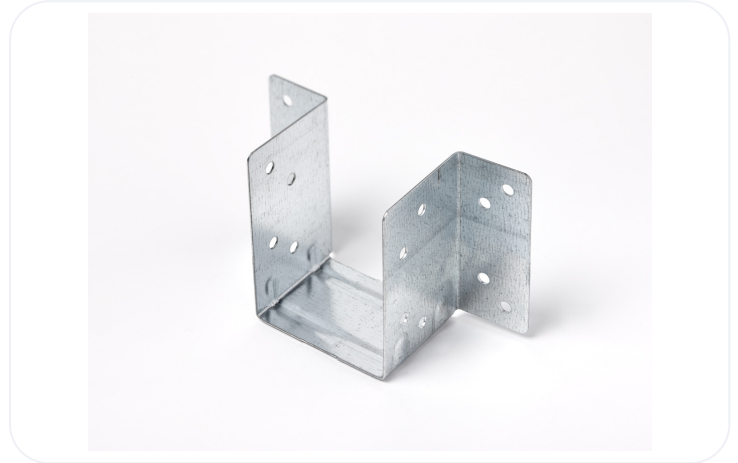


JHMINI47 Timber-Timber Joist Hanger 47mm

Catnic Timber to Timber Mini Joist Hangers, are suitable for joist depths up to 100mm with face fixing, ideal for trimming around ceiling hatches, and similar light duty applications



Options

Product Code	SWL (kN)	Bearing Length (mm)	Joist Width (mm)	Joist Depth (mm)	Leg Length (mm)	Gauge/Thickness (mm)	Weight Per Box (kg)	Weight Per Item (kg)
JHMINI47	3.54	40	47	MAX 250	N/A	0.8	15.5	0.062

Information

Manufactured from galvanised steel to BS EN10346.

Catnic Timber to Timber Joist Hangers are designed with a 50mm bearing and pre-punched side gussets to allow nail fixing into timber joist. Use either Type A or Type B fixings in all pre-punched holes (Type A, 3.75mm x 30mm sheradised square twist nails for manual fixing, Type B, 3.75mm x 35mm sheradised square twist nails for nail gun fixing).

Note: Manufactured from galvanised steel to BS EN10346.

Catnic
 Pontypany Industrial Estate Caerphilly CF83 3GL United Kingdom
 +44 (0)29 2033 7900 | catnic.technical@tatasteeleurope.com
catnic.com

Care has been taken to ensure that the contents of this publication are accurate, but Tata Steel Europe Limited and its subsidiaries, which includes Tata Steel UK Limited, do not accept responsibility or liability for errors or information that is found to be misleading. Before using products or services supplied or manufactured by Tata Steel Europe Limited and its subsidiaries, customers should satisfy themselves as to their suitability.

© Copyright 2024 Tata Steel UK Limited