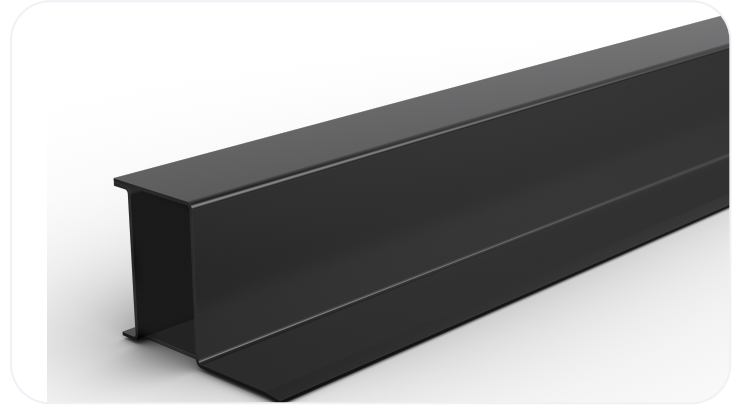


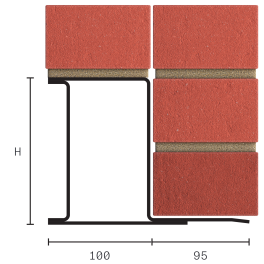
# Heavy Duty Steel Lintel CN71C

<b>Wall Construction</b>	EXTERNAL SOLID WALL
<b>Inner Leaf</b>	N/A
<b>Outer Leaf</b>	200-215
<b>Cavity</b>	N/A
<b>Loading Details</b>	HEAVY



## Specification

Product Code	Standard Length (mm)	SWL (kN)	Weight (kg)	Nominal Height (mm)
CN71C0900	900	49	13.01	143
CN71C1050	1050	49	15.18	143
CN71C1200	1200	49	17.35	143
CN71C1350	1350	49	19.52	143
CN71C1500	1500	49	21.69	143
CN71C1650	1650	44	23.86	143
CN71C1800	1800	44	26.03	143
CN71C1950	1950	44	28.20	143



All ratios are shown inner to outer

- The SWL (safe working load) is based on the total UDL (uniform distributed load) over maximum span using 150mm end bearings.
- Standard lengths are available in 150mm increments up to 1950mm.

**Note:** Whilst the above information is intended to offer general guidance regarding typical applications, it should not be considered as comprehensive. Requirements not fully covered by the above should be referred to our technical services department for individual consideration.

### Catnic

Pontypany Industrial Estate Caerphilly CF83 3GL United Kingdom  
 +44 (0)29 2033 7900 | [catnic.technical@tatasteeleurope.com](mailto:catnic.technical@tatasteeleurope.com)  
[www.catnic.com](http://www.catnic.com)

Care has been taken to ensure that the contents of this publication are accurate, but Tata Steel Europe Limited and its subsidiaries, which includes Tata Steel UK Limited, do not accept responsibility or liability for errors or information that is found to be misleading. Before using products or services supplied or manufactured by Tata Steel Europe Limited and its subsidiaries, customers should satisfy themselves as to their suitability.

© Copyright 2024 Tata Steel UK Limited.