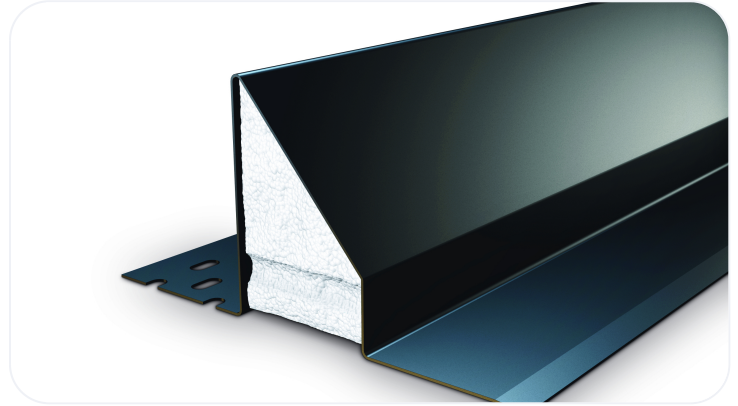


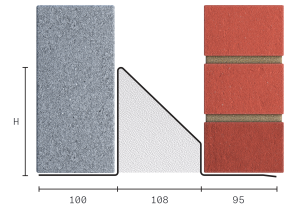
Standard Duty Steel Lintel CG110/100

Wall Construction	CAVITY WALL
Inner Leaf	100-115
Outer Leaf	100-102
Cavity	110-125
Loading Details	STANDARD



Specification

Product Code	Standard Length (mm)	SWL (kN) 1:1/3:1	Weight (kg)	Nominal Height (mm)
CG110/1000900	900	15	6.15	90
CG110/1001050	1050	15	7.11	90
CG110/1001200	1200	15	8.26	90
CG110/1001350	1350	15	9.22	90
CG110/1001500	1500	15	10.17	90
CG110/1001650	1650	18	13.12	139
CG110/1001800	1800	18	14.31	139
CG110/1001950	1950	20	17.58	139
CG110/1002100	2100	20	18.88	139
CG110/1002250	2250	22	21.35	180
CG110/1002400	2400	22	22.73	180
CG110/1002550	2550	26	27.35	220
CG110/1002700	2700	26	28.93	220
CG110/1002850	2850	26	37.97	221
CG110/1003000	3000	26	39.93	221
CG110/1003300	3300	26	43.86	221
CG110/1003600	3600	26	47.79	221



All ratios are shown inner to outer

- The SWL (safe working load) is based on the total UDL (uniform distributed load) over maximum span using 150mm end bearings.
- Standard lengths are available in increments of 150mm at lengths up to 3000mm, 300mm at lengths from 3000mm to 3600mm.

Note: Whilst the above information is intended to offer general guidance regarding typical applications, it should not be considered as comprehensive. Requirements not fully covered by the above should be referred to our technical services department for individual consideration.

Catnic

Pontypandy Industrial Estate Caerphilly CF83 3GL United Kingdom
+44 (0)29 2033 7900 | catnic.technical@tatasteeleurope.com

www.catnic.com

Care has been taken to ensure that the contents of this publication are accurate, but Tata Steel Europe Limited and its subsidiaries, which includes Tata Steel UK Limited, do not accept responsibility or liability for errors or information that is found to be misleading. Before using products or services supplied or manufactured by Tata Steel Europe Limited and its subsidiaries, customers should satisfy themselves as to their suitability.

© Copyright 2024 Tata Steel UK Limited.