

Standard Duty Steel Lintel

BSD100

Wall Construction

Inner Leaf

Outer Leaf

Cavity

Loading Details

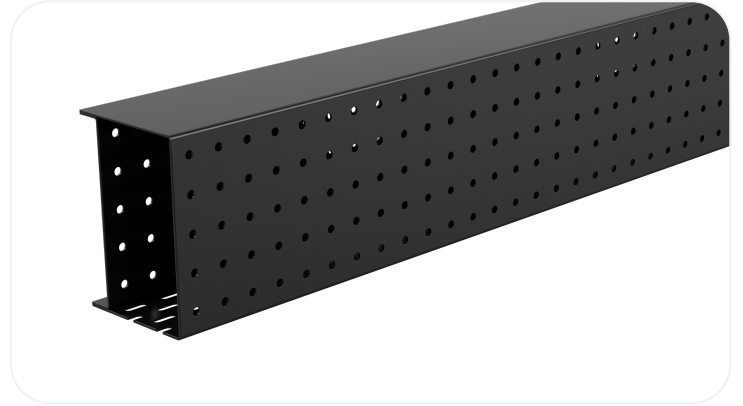
INTERNAL WALL

100

N/A

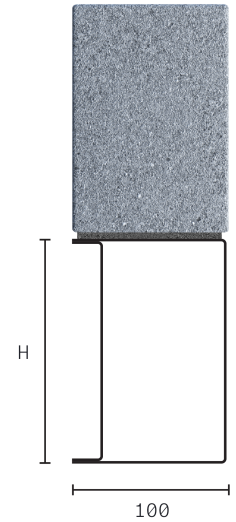
N/A

STANDARD



Specification

Product Code	Standard Length (mm)	SWL (kN)	Weight (kg)	Nominal Height (mm)
BSD1000750	750	19	4.48	143
BSD1000900	900	19	5.37	143
BSD1001050	1050	19	6.27	143
BSD1001200	1200	19	7.16	143
BSD1001350	1350	19	8.06	143
BSD1001500	1500	19	8.96	143
BSD1001650	1650	19	9.85	143
BSD1001800	1800	19	10.75	143
BSD1001950	1950	19	11.64	143
BSD1002100	2100	19	12.54	143
BSD1002250	2250	20	16.79	143
BSD1002400	2400	20	17.90	143
BSD1002550	2550	20	19.02	143
BSD1002700	2700	20	20.14	143
BSD1002850	2850	29	35.34	219
BSD1003000	3000	29	37.20	219
BSD1003300	3300	29	40.92	219
BSD1003600	3600	29	44.64	219
BSD1003900	3900	29	61.23	219
BSD1004200	4200	29	65.94	219
BSD1004575	4575	29	71.83	219
BSD1004800	4800	27	75.36	219



All ratios are shown inner to outer

- The SWL (safe working load) is based on the total UDL (uniform distributed load) over maximum span using 150mm end bearings.
- Standard lengths are available in increments of 150mm at lengths up to 3000mm, 300mm at lengths from 3000mm to 4800mm (including 4575mm, but excluding 4500mm).

Note: Whilst the above information is intended to offer general guidance regarding typical applications, it should not be considered as comprehensive. Requirements not fully covered by the above should be referred to our technical services department for individual consideration.

Catnic

Pontypandy Industrial Estate Caerphilly CF83 3GL United Kingdom

+44 (0)29 2033 7900 | catnic.technical@tatasteeleurope.com

www.catnic.com

Care has been taken to ensure that the contents of this publication are accurate, but Tata Steel Europe Limited and its subsidiaries, which includes Tata Steel UK Limited, do not accept responsibility or liability for errors or information that is found to be misleading. Before using products or services supplied or manufactured by Tata Steel Europe Limited and its subsidiaries, customers should satisfy themselves as to their suitability.

© Copyright 2024 Tata Steel UK Limited.