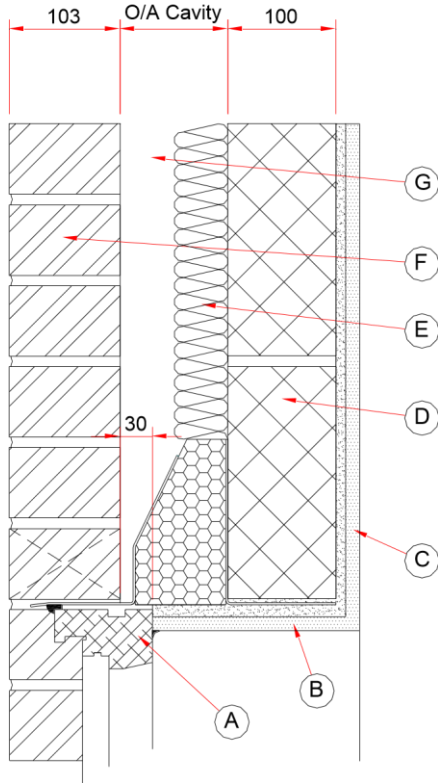


Catnic Lintel Psi values (7-3-22) Thermally Broken Lintel Partial Fill Cavity Wall Construction



	Materials	Thickness (mm)	ψ Value (W/m.K)
(A)	Window frame	~	~
(B)	Plasterboard	12.5	0.19
	+ Adhesive	10.0	0.09
(C)	Plasterboard on Dabs+Air Space	12.5	0.19
		10.0	0.09
(D)	Blockwork	100	0.11
(E)	Insulation	50	0.022
(F)	Brick	103	0.77
(G)	Residual Cavity	50	0.278
Lintel	Steel	~	52
	Insulation	~	0.034
Comment: Continuous band of adhesive to soffit area			

Overall Cavity (mm)	Lintel		Psi value (W/m.K)
	Code	Type	
100	TS90/100	Standard Duty	0.042
	TH90/100	Heavy Duty	0.050
	TX90/100	Extra Heavy Duty	0.050
125	TS110/100	Standard Duty	0.042
	TH110/100	Heavy Duty	0.050
	TX110/100	Extra Heavy Duty	0.050
150	TS150/100	Standard Duty	0.033
	TH150/100	Heavy Duty	0.037
	TX150/100	Extra Heavy Duty	0.037

To limit the risk of surface condensation or mould growth the temperature factor for a detail used in the external wall of a dwelling must be greater than 0.75. Used in the above details, the Catnic TS, TH and TX lintels all have temperatures factors greater than 0.75.

Calculation have been produced independently by the Building Research Establishment (BRE) following the conventions set out in BR 497.

Catnic

Pontypandy Industrial Estate Caerphilly CF83 3GL United Kingdom
T +44 (0)29 2033 7900 F +44 (0)29 2088 2820 www.catnic.com

Tata Steel UK Limited Registered in England 2280000. Registered Office: Tata Steel 30 Millbank London SW1P 4WY