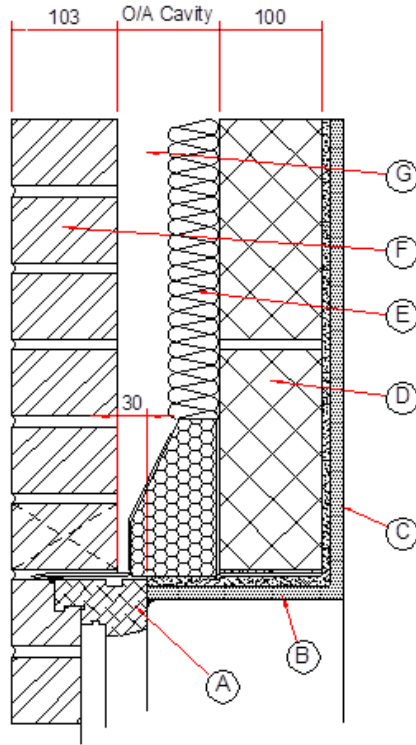


Catnic Lintel Psi values (07/08/2024) Thermally Broken Lintel Partial Fill Cavity Wall Construction



Materials	Thickness (mm)	λ Value (W/m.K)	
(A) Window frame	~	~	
(E) Plasterboard + Adhesive	12.5 10.0	0.19 0.09	
(C) Plasterboard on Dabs + Air Space	12.5 10.0	0.19 0.09	
(D) Blockwork	100	0.11	
(E) Insulation	See Table	0.022	
(F) Brick	103	0.77	
(G) Residual Cavity	50	0.278	
Lintel	Steel Insulation	~ ~	52 0.034
Comment: Continuous band of adhesive to soffit area			

Overall Cavity (mm)	Insulation Thickness (mm)	Lintel		Psi value (W/m.K)
		Code	Type	
100	50	TS90/100	Standard Duty	0.042
		TH90/100	Heavy Duty	0.050
		TX90/100	Extra Heavy Duty	0.050
125	75	TS110/100	Standard Duty	0.042
		TH110/100	Heavy Duty	0.050
		TX110/100	Extra Heavy Duty	0.050
130	80	TS130/100	Standard Duty	0.030
		TH130/100	Heavy Duty	0.031
		TX130/100	Extra Heavy Duty	0.032
150	100	TS150/100	Standard Duty	0.033
		TH150/100	Heavy Duty	0.037
		TX150/100	Extra Heavy Duty	0.037

To limit the risk of surface condensation or mould growth the temperature factor for a detail used in the external wall of a dwelling must be greater than 0.75. Used in the above details, the Catnic TS and TX lintels all have temperatures factors greater than 0.75.

Calculations have been carried out following the conventions set out in BR 497.

Catnic

Pontypany Industrial Estate Caerphilly CF83 3GL United Kingdom
T +44 (0)29 2033 7900 F +44 (0)29 2088 2820 www.catnic.com
Tata Steel UK Limited Registered in England 2280000
Registered Office: Tata Steel 30 Millbank London SW1P 4WY