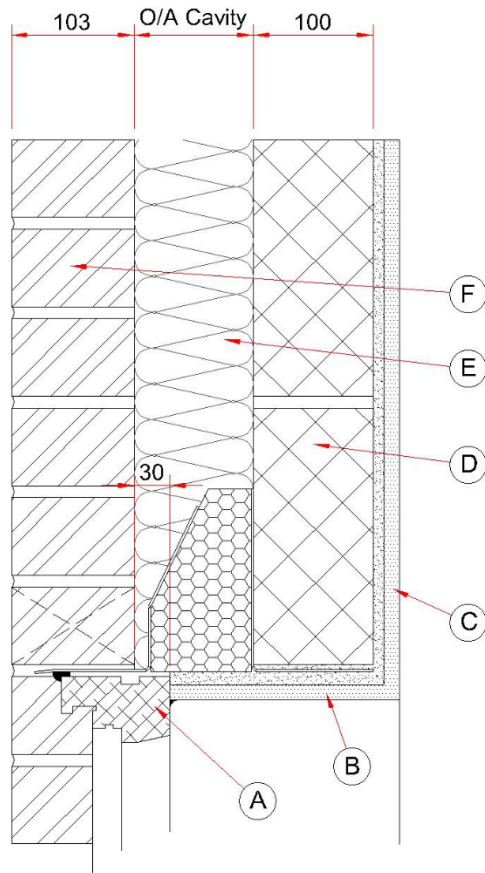


Catnic Thermally Broken Lintel Psi values (15-9-2023) Full Fill Cavity Wall Construction



	Materials	Thickness (mm)	λ Value (W/m.K)
(A)	Window frame	~	~
(B)	Plasterboard + Adhesive	12.5 10.0	0.19 0.09
(C)	Plasterboard on Dabs + Air Space	12.5 10.0	0.19 0.09
(D)	Blockwork	100	0.11
(E)	Insulation		0.037
(F)	Brick	103	0.77
Lintel	Steel	~	52
	Insulation	~	0.034
Comment:	Continuous band of adhesive to soffit area		

Cavity (mm)	Lintel		Psi value (W/m.K)
	Code	Type	
100	TS90/100	Standard Duty	0.043
	TH90/100	Heavy Duty	0.048
	TX90/100	Extra Heavy Duty	0.048
125	TS110/100	Standard Duty	0.043
	TH110/100	Heavy Duty	0.048
	TX110/100	Extra Heavy Duty	0.048
150	TS150/100	Standard Duty	0.029
	TH150/100	Heavy Duty	0.030
	TX150/100	Extra Heavy Duty	0.030

To limit the risk of surface condensation or mould growth the temperature factor for a detail used in the external wall of a dwelling must be greater than 0.75. Used in the above details, Catnic TS, TH and TX lintels all have the temperatures factors greater than 0.75

Calculation have been produced independently by the Building Research Establishment (BRE) following the conventions set out in BR 497.